

Jasper County, Iowa

Joe Brock

Denny Carpenter

Doug Cupples



Board of Supervisors
Courthouse
PO Box 944
Newton IA 50208
Phone 641-792-7016
Fax 641-792-1053

JASPER COUNTY BOARD OF SUPERVISORS MEETING AGENDA

www.co.jasper.ia.us

December 4, 2018

9:30 a.m.

Pledge of Allegiance

- Item 1 **Human Resources – Dennis Simon**
 - a) Employee Hiring – Elderly Nutrition
 - b) Employee Hiring – Secondary Roads

- Item 2 **Approve 2017 Tax Levies Payable 2018/2019**

- Item 3 **Liquor Licenses**
 - a) Fore Seasons Golf & Practice Center
 - b) 5 Day Temporary License for Pheasants Forever @ Christian Conference Center

- Item 4 **Approve Resolution in Support of Application for Annexation Proposed to the City of Monroe**

- Item 5 **Approval of Board of Supervisors minutes for 11/27/18**

- Item 6 **Closed Session in accordance with Iowa Code 21.5(c) “To discuss strategy with legal counsel in matters that are presently in litigation or where litigation is imminent....”**

PUBLIC INPUT & COMMENTS

Tax Rate Summary Sheet

Taxing year 2017



Jasper County

City Districts

District Code	District Name	Total Levy	County	Assessor	Area School	School	City	City Ag	Other
BXBX	BAXTER CITY	39.110530	8.256970	0.367900	0.694680	17.530740	12.072070	0.000000	0.188170
BXBXA	BAXTER CITY AG LAND	30.037680	8.256970	0.367900	0.694680	17.530740	0.000000	2.999220	0.188170
CFCF	COLFAX CITY	44.714960	8.256970	0.367900	0.694680	18.369580	16.837660	0.000000	0.188170
CFCA	COLFAX CITY AG LAND	30.881050	8.256970	0.367900	0.694680	18.369580	0.000000	3.003750	0.188170
CFCFE	COLFAX CITY CITY ANNEX	27.877300	8.256970	0.367900	0.694680	18.369580	0.000000	0.000000	0.188170
KLNT	KELLOGG CITY	33.393940	8.256970	0.367900	0.694680	15.786220	8.100000	0.000000	0.188170
LBGNT	LAMBS GROVE CITY	37.317640	8.256970	0.367900	0.694680	15.786220	12.023700	0.000000	0.188170
LVLN	LYNNVILLE CITY	31.330030	8.256970	0.367900	0.694680	12.462310	9.360000	0.000000	0.188170
LVLNA	LYNNVILLE CITY AG LAND	24.973780	8.256970	0.367900	0.694680	12.462310	0.000000	3.003750	0.188170
MGMG	MINGO CITY	40.589910	8.256970	0.367900	0.694680	18.369580	12.712610	0.000000	0.188170
MGMGA	MINGO CITY AG LAND	30.881050	8.256970	0.367900	0.694680	18.369580	0.000000	3.003750	0.188170
MVCF	MITCHELLVILLE CITY	42.103650	8.256970	0.367900	0.694680	18.369580	13.834650	0.000000	0.579870
MVCFA	MITCHELLVILLE CITY AG LD	31.272750	8.256970	0.367900	0.694680	18.369580	0.000000	3.003750	0.579870
MNMN	MONROE CITY	38.600600	8.256970	0.367900	0.694680	15.988640	13.104240	0.000000	0.188170
MNMNA	MONROE CITY AG LAND	28.497770	8.256970	0.367900	0.694680	15.988640	0.000000	3.001410	0.188170
NWNT	NEWTON CITY	42.433940	8.256970	0.367900	0.694680	15.786220	17.140000	0.000000	0.188170
NWNTA	NEWTON CITY AG LAND	28.297690	8.256970	0.367900	0.694680	15.786220	0.000000	3.003750	0.188170
ZZMC	NEWTON CITY MONIES & CREDITS	5.000000	0.000000	0.000000	0.000000	0.000000	0.000000	0.000000	5.000000
NWNTC	NEWTON CITY RACEWAY ANEX	25.293940	8.256970	0.367900	0.694680	15.786220	0.000000	0.000000	0.188170
NWNT1	NEWTON CITY SSMID	43.810290	8.256970	0.367900	0.694680	15.786220	18.516350	0.000000	0.188170
OAGN	OAKLAND ACRES CITY	30.720250	8.256970	0.367900	0.996680	14.246770	6.663760	0.000000	0.188170
PCPC	PRAIRIE CITY CITY	37.180230	8.256970	0.367900	0.694680	15.988640	11.683870	0.000000	0.188170
PCPCA	PRAIRIE CITY CITY AG LAND	28.500110	8.256970	0.367900	0.694680	15.988640	0.000000	3.003750	0.188170
RSMN	REASNOR CITY	37.398540	8.256970	0.367900	0.694680	15.988640	11.902180	0.000000	0.188170
RSMNA	REASNOR CITY AG LAND	28.500110	8.256970	0.367900	0.694680	15.988640	0.000000	3.003750	0.188170
SYLS	SULLY CITY	31.876960	8.256970	0.367900	0.694680	12.462310	9.906930	0.000000	0.188170
SYLSA	SULLY CITY AG LAND	24.973780	8.256970	0.367900	0.694680	12.462310	0.000000	3.003750	0.188170
VALMG	VALERIA CITY	35.977300	8.256970	0.367900	0.694680	18.369580	8.100000	0.000000	0.188170

Rural Districts

District Code	District Name	Total Levy	County	Assessor	Area School	School	Township	Other
BVLS6	B VISTA/L-SULLY/SULLY FIRE	26.154540	11.636970	0.367900	0.694680	12.462310	0.804510	0.188170
BVLS4	B VISTA/L-SULLY/KELL FIRE	26.232040	11.636970	0.367900	0.694680	12.462310	0.882010	0.188170
BVLS5	B VISTA/L-SY/REASNOR FIRE	26.224540	11.636970	0.367900	0.694680	12.462310	0.874510	0.188170
BVNT4	B VISTA/NEW/KELLOGG FIRE	29.555950	11.636970	0.367900	0.694680	15.786220	0.882010	0.188170
BVNT5	B VISTA/NEW/REASNOR FIRE	29.548450	11.636970	0.367900	0.694680	15.786220	0.874510	0.188170
BVNT6	B VISTA/NEW/SULLY FIRE	29.478450	11.636970	0.367900	0.694680	15.786220	0.804510	0.188170
BVNT1	BUENA VISTA/NEWTON/NBF	29.555950	11.636970	0.367900	0.694680	15.786220	0.274510	0.795670
CCBFF	CL CR/BOND-F/COLLINS FIRE	32.692090	11.636970	0.367900	0.694680	19.108950	0.695420	0.188170
CCBFE	CL CR/BOND-F/MINGO FIRE	32.492090	11.636970	0.367900	0.694680	19.108950	0.495420	0.188170
CCMGE	CL CR/COL-MNGO/MINGO FIRE	31.752720	11.636970	0.367900	0.694680	18.369580	0.495420	0.188170
CCCNF	CL CR/COL-MXW/JCOLNS FIRE	28.587650	11.636970	0.367900	0.694680	15.004510	0.695420	0.188170
CCBX7	CLEAR CR/BAXTER/WM CONTR	31.116380	11.636970	0.367900	0.694680	17.530740	0.697920	0.188170
DMPC2	DES M/PCM/CAMP TWP FIRE	29.892240	11.636970	0.367900	0.694680	15.988640	1.015880	0.188170
DMMNB	DES M/PCM/MONORE FIRE	29.544740	11.636970	0.367900	0.694680	15.988640	0.668380	0.188170
DMSPC	DES M/SEP/CAMP TWP FIRE	30.404180	11.636970	0.367900	0.694680	16.500580	1.015880	0.188170
DMPC2	DES MOINES/PCM/MWC	29.892240	11.636970	0.367900	0.694680	15.988640	0.408380	0.795670
ECLS5	ELK CR/L-SULLY/REAS FIRE	26.091870	11.636970	0.367900	0.694680	12.462310	0.741840	0.188170
ECLS6	ELK CR/L-SULLY/SULLY FIRE	26.021870	11.636970	0.367900	0.694680	12.462310	0.671840	0.188170
ECMN5	ELK CR/PCM/REASNOR FIRE	29.618200	11.636970	0.367900	0.694680	15.988640	0.741840	0.188170
ECPLE	ELK CR/PELLA/SULLY FIRE	28.745900	11.636970	0.367900	0.694680	15.186340	0.671840	0.188170
ECPLE5	ELK CREEK/PELLA/REAS FIRE	28.815900	11.636970	0.367900	0.694680	15.186340	0.741840	0.188170
FVNT	FAIRVIEW/NEWTON	29.198250	11.636970	0.367900	0.694680	15.786220	0.524310	0.188170
FVNT1	FAIRVIEW/NEWTON/NBF	29.363260	11.636970	0.367900	0.694680	15.786220	0.081820	0.795670
FVMN	FAIRVIEW/PCM	29.400670	11.636970	0.367900	0.694680	15.988640	0.524310	0.188170
FVPC2	FAIRVIEW/PCM/MWC	29.565680	11.636970	0.367900	0.694680	15.988640	0.081820	0.795670
HGGN9	H GR/GRN-NEWB/GILMAN FIRE	28.058930	11.636970	0.367900	0.996680	14.246770	0.622440	0.188170
HGGN8	H GR/GRN-NEWB/GRINL FIRE	28.248930	11.636970	0.367900	0.996680	14.246770	0.812440	0.188170
HGGN4	H GR/GRN-NEWB/KELL FIRE	28.256430	11.636970	0.367900	0.996680	14.246770	0.819940	0.188170
HGSM9	H GROVE/E MRS/JGILMN FIRE	28.024200	11.636970	0.367900	0.996680	14.212040	0.622440	0.188170
HGNT4	H GROVE/NEW/KELLOGG FIRE	29.493880	11.636970	0.367900	0.694680	15.786220	0.819940	0.188170



Rural Districts

District Code	District Name	Total Levy	County	Assessor	Area School	School	Township	Other
IDBX7	INDEP/BAXTER/WM CONTRACT	31.074780	11.636970	0.367900	0.694680	17.530740	0.656320	0.188170
IDCM7	INDEP/COL-MINGO/WM CONTR	31.913620	11.636970	0.367900	0.694680	18.369580	0.656320	0.188170
KGNT	KELLOGG TWP/NEWTON	29.481800	11.636970	0.367900	0.694680	15.786220	0.807860	0.188170
LGLS	LYNN GR/L-SLLY/SULLY FIRE	26.385270	11.636970	0.367900	0.694680	12.462310	1.035240	0.188170
MKBX3	MALAKA/BAXTER/WM	31.030000	11.636970	0.367900	0.694680	17.530740	0.011540	0.788170
MKBX7	MALAKA/BAXTER/WM CONTRACT	31.037500	11.636970	0.367900	0.694680	17.530740	0.619040	0.188170
MKNT1	MALAKA/NEWTON/NBF	29.292980	11.636970	0.367900	0.694680	15.786220	0.011540	0.795670
MKNT3	MALAKA/NEWTON/WM	29.285480	11.636970	0.367900	0.694680	15.786220	0.011540	0.788170
MKNT7	MALAKA/NEWTON/WM CONTRACT	29.292980	11.636970	0.367900	0.694680	15.786220	0.619040	0.188170
MRSMG	MARIPIE MRSHL/JFFRSN FIRE	28.029180	11.636970	0.367900	0.996680	14.212040	0.627420	0.188170
MRSM4	MARIPIE MRSHL/KELGG FIRE	28.029180	11.636970	0.367900	0.996680	14.212040	0.627420	0.188170
MRSM7	MARIPIE MRSHL/WM CONTRACT	28.029180	11.636970	0.367900	0.996680	14.212040	0.627420	0.188170
MRNTG	MARIPOSA/NEW/JEFFRSN FIRE	29.301360	11.636970	0.367900	0.694680	15.786220	0.627420	0.188170
MRNT4	MARIPOSA/NEW/KELLOGG FIRE	29.301360	11.636970	0.367900	0.694680	15.786220	0.627420	0.188170
MRNT1	MARIPOSA/NEWTON/NBF	29.301360	11.636970	0.367900	0.694680	15.786220	0.019920	0.795670
MRNT7	MARIPOSA/NEWTON/WM CONTRC	29.301360	11.636970	0.367900	0.694680	15.786220	0.627420	0.188170
MPCFD	MD PR/COL-M/COLFAX FIRE	31.843150	11.636970	0.367900	0.694680	18.369580	0.585850	0.188170
MPCFA	MD PR/COL-MINGO/WM CONTR	31.843150	11.636970	0.367900	0.694680	18.369580	0.585850	0.188170
MPNTB	MD PR/NEWTON/MONROE FIRE	29.259790	11.636970	0.367900	0.694680	15.786220	0.585850	0.188170
MNTA	MD PR/NEWTON/WM CONTRCTD	29.259790	11.636970	0.367900	0.694680	15.786220	0.585850	0.188170
MPPCD	MD PR/PCM/COLFAX FIRE	29.462210	11.636970	0.367900	0.694680	15.988640	0.585850	0.188170
MPPCA	MD PR/PCM/WM CONTRCTD	29.462210	11.636970	0.367900	0.694680	15.988640	0.585850	0.188170
MPCF1	MD PRAIRIE/COLF-MINGO/NBF	32.045650	11.636970	0.367900	0.694680	18.369580	0.180850	0.795670
MPCF2	MD PRAIRIE/COLF-MINGO/WM	32.045650	11.636970	0.367900	0.694680	18.369580	0.180850	0.795670
MPNT1	MOUND PRAIRIE/NEWTON/NBF	29.462290	11.636970	0.367900	0.694680	15.786220	0.180850	0.795670
MPNT2	MOUND PRAIRIE/NEWTON/WM	29.462290	11.636970	0.367900	0.694680	15.786220	0.180850	0.795670
MPPC2	MOUND PRAIRIE/PCM/WM	29.664710	11.636970	0.367900	0.694680	15.988640	0.180850	0.795670
NTNTS	NEW TWP/NEWTON/NBF/SEWER	29.716280	11.636970	0.367900	0.694680	15.786220	0.050580	1.179930
NTNT7	NEW TWP/NEWTON/WM CONTRC	29.332020	11.636970	0.367900	0.694680	15.786220	0.658080	0.188170
NTNT1	NEWTON TWP/NEWTON/NBF	29.332020	11.636970	0.367900	0.694680	15.786220	0.050580	0.795670
PALS	PALO ALTO/L-S/REASNR FIRE	26.287420	11.636970	0.367900	0.694680	12.462310	0.937390	0.188170
PANT	PALO ALTO/NEW/REASNR FIRE	29.611330	11.636970	0.367900	0.694680	15.786220	0.937390	0.188170
PANT1	PALO ALTO/NEWTON/NBF	29.652090	11.636970	0.367900	0.694680	15.786220	0.370650	0.795670
PAMN	PALO ALTO/PCM/REASNR FIRE	29.813750	11.636970	0.367900	0.694680	15.988640	0.937390	0.188170
PWCME	POWSHK/COL-M/MINGO FIRE	31.927380	11.636970	0.367900	0.694680	18.369580	0.670080	0.188170
PWCMD	POWSHK/COL-MINGO/COL FIRE	31.927380	11.636970	0.367900	0.694680	18.369580	0.670080	0.188170
RCGN8	R CR/GRN-NEWB/GRINL FIRE	28.141790	11.636970	0.367900	0.996680	14.246770	0.705300	0.188170
RCGN4	R CRK/GRN-NEWB/KELL FIRE	28.149290	11.636970	0.367900	0.996680	14.246770	0.712800	0.188170
RCNT4	R CRK/NEWTON/KELGG FIRE	29.386740	11.636970	0.367900	0.694680	15.786220	0.712800	0.188170
RLNT4	RICHLAND/NEWTON/KELL FIRE	29.348940	11.636970	0.367900	0.694680	15.786220	0.675000	0.188170
RLGN6	RICHLD/GRN-NEWB/SLLY FIRE	28.033990	11.636970	0.367900	0.996680	14.246770	0.597500	0.188170
RLLS4	RICHLD/L-SULLY/KELL FIRE	26.025030	11.636970	0.367900	0.694680	12.462310	0.675000	0.188170
RLLS6	RICHLD/L-SULLY/SULLY FIRE	25.947530	11.636970	0.367900	0.694680	12.462310	0.597500	0.188170
RLGN8	RICHLND/GRN-NEWB/GRN FIRE	28.103990	11.636970	0.367900	0.996680	14.246770	0.667500	0.188170
RLGN4	RICHLND/GRN-NEWB/KEL FIRE	28.111490	11.636970	0.367900	0.996680	14.246770	0.675000	0.188170
RLLS8	RICHLND/L-SULLY/GRNL FIRE	26.017530	11.636970	0.367900	0.694680	12.462310	0.667500	0.188170
SHBXE	SHERMAN/BAXTER/MINGO FIRE	30.854060	11.636970	0.367900	0.694680	17.530740	0.435600	0.188170
SHBX1	SHERMAN/BAXTER/NBF	31.056560	11.636970	0.367900	0.694680	17.530740	0.030600	0.795670
SHBX7	SHERMAN/BAXTER/WM CONTRC	31.056560	11.636970	0.367900	0.694680	17.530740	0.638100	0.188170
SHCMD	SHERMAN/COL-M/COLFAX FIRE	31.692900	11.636970	0.367900	0.694680	18.369580	0.435600	0.188170
SHCME	SHERMAN/COL-M/MINGO FIRE	31.692900	11.636970	0.367900	0.694680	18.369580	0.435600	0.188170
SHNTD	SHERMAN/NEWTN/COLFAX FIRE	29.109540	11.636970	0.367900	0.694680	15.786220	0.435600	0.188170
SHNTE	SHERMAN/NEWTON/MINGO FIRE	29.109540	11.636970	0.367900	0.694680	15.786220	0.435600	0.188170
SHNT1	SHERMAN/NEWTON/NBF	29.312040	11.636970	0.367900	0.694680	15.786220	0.030600	0.795670
SHNT7	SHERMAN/NEWTON/WM CONTRC	29.312040	11.636970	0.367900	0.694680	15.786220	0.638100	0.188170
WSCFH	WASH/COL-M/MITCHLVL FIRE	31.675780	11.636970	0.367900	0.694680	18.369580	0.418480	0.188170
WSCFA	WASH/COL-M/WM CONTRACTED	31.675780	11.636970	0.367900	0.694680	18.369580	0.418480	0.188170
WSSPH	WASH/SE POLK/MTCHLVL FIRE	29.806780	11.636970	0.367900	0.694680	16.500580	0.418480	0.188170
WSCFD	WASHGTN/COL-M/COLFAX FIRE	31.675780	11.636970	0.367900	0.694680	18.369580	0.418480	0.188170
WSCF2	WASHINGTON/COLF-MINGO/WM	31.874480	11.636970	0.367900	0.694680	18.369580	0.009680	0.795670



Jasper County

Tax Rate Summary Sheet

Taxing year 2017

Rural Districts

District Code	District Name	Total Levy	County	Assessor	Area School	School	Township	Other
WSPC2	WASHINGTON/PCM/WC	29.493540	11.636970	0.367900	0.694680	15.988640	0.009680	0.795670
WSPCA	WASHINGTON/PCM/WC CONTRCT	29.294840	11.636970	0.367900	0.694680	15.988640	0.418480	0.188170
WSPCH	WASHNGTN/PCM/MTCHLVL FIRE	29.294840	11.636970	0.367900	0.694680	15.988640	0.418480	0.188170



Authority Detail

Township	Total Levy	OWNED CEMETERY	JEFFERSON TWP FIRE	WEST MALAKA CONTRA CTED AMBULANCE	WEST MALAKA CONTRA CTED FIRE	FIRE	MINGO FIRE	GRINELL AMBULANCE	GRINELL RURAL FIRE	NON-OWNED CEMETERY	SULLY FIRE	SULLY AMBULANCE	COLFAX FIRE	KELLOGG AMBULANCE	KELLOGG FIRE	REASOR AMBULANCE	REASOR FIRE	CAMP TWP AMBULANCE	CAMP TWP FIRE	Tort Liability	WALNUT CREEK CONTRA CTED FIRE	COLLINGSBURY & AMBULANCE	MITCHELLVILLE FIRE	MONROE FIRE	GILMAN FIRE	
BUENA VISTA TOWNSHIP/CEMETERY	0.27451	0.27451																								
BUENA VISTA TOWNSHIP/KELLOGG FIRE	0.60750													0.13500	0.47250											
BUENA VISTA TOWNSHIP/REASOR FIRE	0.60000															0.20000	0.40000									
BUENA VISTA TOWNSHIP/SULLY FIRE	0.53000											0.45000	0.08000													
CLEAR CREEK TOWNSHIP/CEMETERY	0.09042	0.02910								0.06132																
CLEAR CREEK TOWNSHIP/COLLINS FIRE	0.60500																					0.60500				
CLEAR CREEK TOWNSHIP/MINGO FIRE	0.40500						0.40500																			
CLEAR CREEK TWP/WEST MALAKA CONTRTD FIRE	0.60750			0.20250	0.40500																					
DES MOINES TOWNSHIP/CAMP TWP FIRE	0.60750																	0.20250	0.40500							
DES MOINES TOWNSHIP/CEMETERY	0.40836	0.40836																								
DES MOINES TOWNSHIP/MONROE FIRE	0.26000																							0.26000		
ELK CREEK TOWNSHIP/CEMETERY	0.14184	0.12789								0.01395																
ELK CREEK TOWNSHIP/REASOR FIRE	0.60000															0.20000	0.40000									
ELK CREEK TOWNSHIP/SULLY FIRE	0.53000										0.45000	0.08000														
FAIRVIEW TOWNSHIP/CEMETERY	0.08182	0.08182																								
FAIRVIEW TOWNSHIP/FIRE	0.44249					0.44249																				
HICKORY GROVE TOWNSHIP/CEMETERY	0.21244	0.21244																								
HICKORY GROVE TOWNSHIP/GILMAN FIRE	0.41000																								0.41000	
HICKORY GROVE TOWNSHIP/GRINNELL FIRE	0.60000							0.20000	0.40000																	
HICKORY GROVE TOWNSHIP/KELLOGG FIRE	0.60750													0.13500	0.47250											
INDEPENDENCE TOWNSHIP/CEMETERY	0.05648	0.05648																								
INDEPENDENCE TWP/WEST MALAKA CONTRCTD FIRE	0.59784			0.19929	0.39855																					
KELLOGG TOWNSHIP/CEMETERY & LITIGATION	0.20036	0.14143								0.05893																
KELLOGG TOWNSHIP/KELLOGG FIRE	0.60750													0.13500	0.47250											
LYNN GROVE TOWNSHIP/CEMETERY	0.50524	0.43775								0.06749																
LYNN GROVE TOWNSHIP/SULLY FIRE	0.53000										0.45000	0.08000														
MALAKA TOWNSHIP/CEMETERY	0.01154	0.01154																								
MALAKA TWP/WEST MALAKA CONTRACTED FIRE	0.60750			0.20250	0.40500																					
MARIPOSA TOWNSHIP/CEMETERY	0.01992	0.01992																								
MARIPOSA TOWNSHIP/JEFFERSON TWP FIRE	0.60750		0.60750																							
MARIPOSA TOWNSHIP/KELLOGG FIRE	0.60750													0.13500	0.47250											
MARIPOSA TWP/WEST MALAKA CONTRACTED FIRE	0.60750			0.20250	0.40500																					
MOUND PR TWP/WALNUT CREEK CONTRCTD FIRE	0.40500																					0.40500				
MOUND PRAIRIE TOWNSHIP/CEMETERY	0.18085	0.11335								0.06750																
MOUND PRAIRIE TOWNSHIP/COLFAX FIRE	0.40500												0.40500													
MOUND PRAIRIE TOWNSHIP/MONROE FIRE	0.40500																							0.40500		
NEWTON TOWNSHIP/CEMETERY	0.05058	0.00401								0.04657																
NEWTON TWP/WEST MALAKA CONTRACTED FIRE	0.60750			0.20250	0.40500																					
PALO ALTO TOWNSHIP/CEMETERY	0.37065	0.37065																								
PALO ALTO TOWNSHIP/REASOR FIRE	0.59674															0.18888	0.37786									
POWESHIEK TOWNSHIP/CEMETERY	0.26508	0.26508																								



Townships	Total Levy	OWNED CEMETERY	JEFFERSON TWP FIRE	WEST MALAKA CONTRA CTED AMBULANCE	WEST MALAKA CONTRA CTED FIRE	FIRE	MINCO FIRE	GRINELL AMBULANCE	GRINELL RURAL FIRE	NON-OWNED CEMETERY	SULLY FIRE	SULLY AMBULANCE	COLFAX FIRE	KELLOGG AMBULANCE	KELLOGG FIRE	REASON OR AMBULANCE	REASON OR FIRE	CAMP TWP AMBULANCE	CAMP TWP FIRE	Tort LIBRARY	WALNUT CREEK CONTRA CTED FIRE	COLLINS & AMBULANCE	MITCHELLVILLE FIRE	MONROE FIRE	GILMAN FIRE	
POWESHIEK TOWNSHIP/COLFAX FIRE	0.40500												0.40500													
POWESHIEK TOWNSHIP/MINGO FIRE	0.40500					0.40500																				
RICHLAND TOWNSHIP/CEMETERY	0.08750									0.08750																
RICHLAND TOWNSHIP/GRINNELL FIRE	0.60000							0.20000	0.40000																	
RICHLAND TOWNSHIP/KELLOGG FIRE	0.60750													0.13500	0.47250											
RICHLAND TOWNSHIP/SULLY FIRE	0.53000										0.45000	0.08000														
ROCK CREEK TOWNSHIP/CEMETERY	0.10530	0.10530																								
ROCK CREEK TOWNSHIP/GRINNELL FIRE	0.60000							0.20000	0.40000																	
ROCK CREEK TOWNSHIP/KELLOGG FIRE	0.60750													0.13500	0.47250											
SHERMAN TOWNSHIP/CEMETERY	0.03060									0.03060																
SHERMAN TOWNSHIP/COLFAX FIRE	0.40500												0.40500													
SHERMAN TOWNSHIP/MINGO FIRE	0.40500					0.40500																				
SHERMAN TWP/WEST MALAKA CONTRACTED FIRE	0.60750		0.20250	0.40500																						
WASHINGTON TOWNSHIP/CEMETERY	0.00968									0.00588											0.00380					
WASHINGTON TOWNSHIP/COLFAX FIRE	0.40680												0.40500								0.00380					
WASHINGTON TOWNSHIP/MITCHELLVILLE FIRE	0.40680																				0.00380		0.40500			
WASHINGTON TWP/WALNUT CR CONTRACTED FIRE	0.40680																				0.00380	0.40500				

City	Total Levy	GENERAL-\$8.10 LIMIT	INSURANCE	EMERGENCY	EMPLOYEE BENEFITS	DEBT SERVICE	SUP LOCAL EMERG MGMT	SUPPORT OF PUBLIC LIBRARY	SUPPORT OF LOCAL EMG MGMT COM	SUPPORT LOCAL EMG MGMT COM	SMID	CITY-OWNED CIVIC CENTER	PLANNING SANITARY DISPOSAL	SUPPORT LOCAL EMG MGMT COM	CAPITAL IMPROVEMENTS	SUPPORT LOCAL EMG MGMT
BAXTER CORPORATION	12.072070	8.100000	1.271810	0.270000	1.898600	0.462050										0.069610
COLFAX CORPORATION	18.837660	8.100000	1.708970	0.270000	4.166710	2.523310	0.068670									
KELLOGG CORPORATION	8.100000	8.100000														
LAMBS GROVE CORPORATION	12.023700	8.100000	0.309590	0.270000	0.258000	2.771730		0.270000	0.044380							
LYNNVILLE CORPORATION	9.360000	8.100000	1.207160				0.052840									
MINGO CORPORATION	12.712610	8.100000	2.453010	0.270000	1.898600											
MITCHELLVILLE CORPORATION	13.834650	8.100000	1.227500	0.270000	2.438750	1.714570				0.063530						
MONROE CORPORATION	13.104240	8.100000		0.270000	3.041020	0.958180								0.060040	0.675000	
NEWTON CORPORATION	17.140000	8.100000	0.362700		8.003280	2.350500		0.270000								
NEWTON CORPORATION SMID	1.376350										1.376350					
OAKLAND ACRES CORPORATION	6.663760	6.663760														
PRAIRIE CITY CORPORATION	11.663870	8.100000	0.59730	0.270000	2.520340							0.110870	0.087500			
REASONOR CORPORATION	11.902190	8.100000	1.566830	0.261140	0.452640	1.425820				0.065430						
SULLY CORPORATION	9.806930	8.100000				1.806930										
VALERIA CORPORATION	8.100000	8.100000														

School	Total Levy	PLAYGROUND	VOTED PHYSICAL PLANT/EQ	MANAGEMENT	GENERAL	REGULAR PHYSICAL PLANT/EQ	DEBT SERVICE	INSTRUCTIONAL SUPPORT	VOTED PHYSICAL PLANT & EQUIPMENT	REGULAR PHYSICAL PLANT
BAXTER SCHOOL	17.530740		0.313800	2.281280	10.544820	0.330000	3.683690	0.377150		
BONDURANT-FARRAR SCHOOL	19.108950		1.340000	0.730250	11.741460	0.330000	4.050000	0.917240		
COLFAX-MINGO SCHOOL	18.369580			0.553460	12.566790	0.330000	4.050000	0.196360	0.670000	
COLLINS-MAXWELL SCHOOL	15.004510		1.340000	0.967750	12.312530	0.330000		0.034230		
EAST MARSHALL SCHOOL	14.212040	0.135000	0.670000	1.542270	10.104430	0.330000	1.414110	0.016230		
GRINNELL-NEWBURG SCHOOL	14.246770		0.510300	1.505730	10.770740	0.330000		1.130000		
LYNNVILLE-SULLY SCHOOL	12.462310		0.492210	1.204950	9.049330		1.094640	0.201180		0.330000
NEWTON SCHOOL	15.786220		0.670000	0.701560	11.529260		2.698690	0.185510		
PCM SCHOOL	15.888640		0.670000	0.740020	11.468870	0.330000	2.149420	0.630530		
PELLA SCHOOL	15.186340		0.670000	1.250430	9.931150	0.330000	2.836870	0.167890		
SOUTHEAST POLK SCHOOL	16.500580		0.670000	0.978420	10.200810	0.330000	3.944590	0.376760		

Area School	Total Levy	EQUIPMENT	EARLY RETIREMENT	GENERAL	DEBT SERVICE	INSURANCE	PLANT	TORT LIABILITY	UNEMPLOYMENT
DMACC - XI MERGED AREA SCHOOL	0.694680	0.060000	0.087520	0.202500		0.103640	0.202500	0.009910	0.01610
IOWA VALLEY - VI MERGED AREA SCHOOL	0.996680	0.060000	0.111780	0.202500	0.100030	0.249220	0.202500	0.038610	0.002060



Jasper County

Tax Rate Summary Sheet

Taxing year 2017

County	Total Levy	RURAL SERVICES BASIC	GENERAL SUPPLEMENTAL	2016 COUNTY HOME CAPITAL PROJ FUND	2013 GO REFINDED LEVCIP	GENERAL BASIC	COUNTY SERVICES	PIONEER CEMETERY	2012 C GO BONDS	JC SHERIFF RADIO DEBT
COUNTY FUNDS-COUNTYWIDE	8.256970		2.739050	0.085700	0.089616	4.429020	0.539220	0.001990	0.290155	0.002019
COUNTY FUNDS-RURAL ONLY	3.380000	3.380000								
Assessor										
COUNTY ASSESSOR										0.367900
										ASSESSMENT EXPENSE
										0.367900
Other										
	Total Levy	BRUCCELLOSIS & TUBERCULOSIS ERADICATION	AGRICULTURAL EXTENSION EDUCATION	DES MOINES REGIONAL TRANSIT AUTHORITY	GENERAL	STATE'S SHARE-MONIES & CREDITS	CITY OF NEWTON-MONIES & CREDITS	COUNTY SHARE-MONIES & CREDITS		
AGRICULTURAL EXTENSION COUNCIL	0.185270		0.185270							
BRUCCELLOSIS & TUBERCULOSIS ERADICATION	0.002900	0.002900								
CITY OF NEWTON, MONIES & CREDITS	1.500000						1.500000			
COUNTRY CLUB ACRES SANITARY SEWER DIST.	0.384260				0.384260					
COUNTY SHARE-MONIES & CREDITS	1.000000								1.000000	
DES MOINES REGIONAL TRANSIT AUTHORITY	0.391700			0.391700						
NEWTON RURAL BENEFITED FIRE DISTRICT	0.607500				0.607500					
STATE OF IOWA-MONIES & CREDITS	2.500000					2.500000				
WALNUT CREEK BENEFITED FIRE DISTRICT	0.607500				0.607500					
WEST MALAKA BENEFITED FIRE DISTRICT	0.600000				0.600000					

Resolution _____

SUPERVISORS' POSITION ON ANNEXATION APPLICATION CONCERNING DARRELL & KARLIN HJORTSHOJ
AND THE CITY OF MONROE, IOWA

WHEREAS, The City of Monroe has received an application for the Voluntary Annexation from Darrell L. Hjortshoj and Karlin Hjortshoj to annex three lots into the City of Monroe, the property legally described in the Annexation Plat attached.

WHEREAS, Pursuant to Iowa Code Section 368.7 it is the obligation of the City of Monroe to notify the Jasper County Board of Supervisors of the application for voluntary annexation;

WHEREAS, Pursuant to Iowa Code Section 368.7 the Supervisors shall pass a resolution state whether or not the Board of Supervisors supports the application or whether it takes no position in support of or against the application;

THEREFORE, The Jasper County Board of Supervisors:

_____ Supports the application for annexation

_____ Opposes the application for annexation

_____ Takes no position on the application for annexation

Passed and Approved this _____ day of December, 2018.

Chairman of the Jasper County Board of Supervisors

Dennis K. Parrott, Jasper County Auditor

INDEX LEGEND

COUNTY: JASPER
SECTION: 25, T-78N, R-20W,
PARCEL "C", SW 1/4 OF THE SW 1/4

SURVEY FOR & OWNER: DARRELL & KARLIN
HJORTSHOJ, MONROE, IOWA

SURVEYOR & SURVEY COMPANY:
J. Brian Morrissey, P.E., P.L.S.
Morrissey Surveying & Consulting, L.L.C.
1405 Hwy G28, Otley, IA 50214

PREPARED BY AND RETURN TO:
J. Brian Morrissey, 1405 Hwy G28, Otley, IA 50214
(515) 480-2531

ANNEXATION PLAT

PART OF PARCEL "C" of the SW 1/4 of the SW 1/4, SEC. 25, T-78N, R-20W
JASPER COUNTY, IOWA

(SEE PAGE 2 FOR GRAPHICAL REPRESENTATION OF THIS PLAT)

DESCRIPTION

That part of Parcel "C" of the Southwest Quarter of the Southwest Quarter of Section 25, Township 78 North, Range 20 West of the Fifth Principal Meridian, Jasper County, Iowa, said Parcel "C" recorded in Book A, Page 328, at the Jasper County, Iowa, Recorder's Office, described as follows:

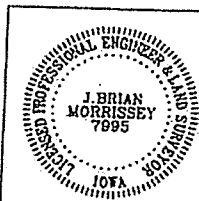
Commencing at the southwest corner of said Section 25, also being the southwest corner of said Parcel "C";
thence on an assumed bearing of North 89 degrees 20 minutes 31 seconds East 252.68 feet along the south line of the Southwest Quarter of the Southwest Quarter of said Section 25 and the south line of said Parcel "C" to the point of beginning;
thence North 00 degrees 39 minutes 29 seconds West 382.67 feet;
thence North 89 degrees 20 minutes 31 seconds East 405.00 feet;
thence South 00 degrees 39 minutes 29 seconds East 382.67 feet to the south line of said Southwest Quarter of the Southwest Quarter and of said Parcel "C";
thence South 89 degrees 20 minutes 31 seconds West 405.00 feet along said south lines to the point of beginning;

Said tract contains 3.56 acres and is subject to a Jasper County Highway Easement over the south 0.56 acres thereof.

MEASURED DISTANCE/BEARING - (M)
RECORDED DISTANCE/BEARING - (R)

MONUMENTS

- ▲ - found sec. cor. (pipe, stone, etc.)
- - set - 5/8" x 18" rebar with orange plastic cap P.L.S. 7995 or Mag nail in pavement
- - no monument found or set
- - found lot cor. (pipe, stone, etc.)



I hereby certify that this land surveying document was prepared and the related survey work was performed by me or under my direct personal supervision and that I am a duly Licensed Land Surveyor under the laws of the State of Iowa.

Signed *J. Brian Morrissey* Date 9/18/18
J. Brian Morrissey Iowa Lic. No. 7995

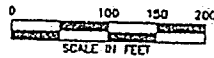
My license renewal date is 12/31/2019.

Pages covered by this seal: 1 & 2

MORRISSEY SURVEYING & CONSULTING, LLC, 1405 HWY. G 28, OTLEY, IOWA 50214, 515-480-2531
PROJ. NO. 944-17

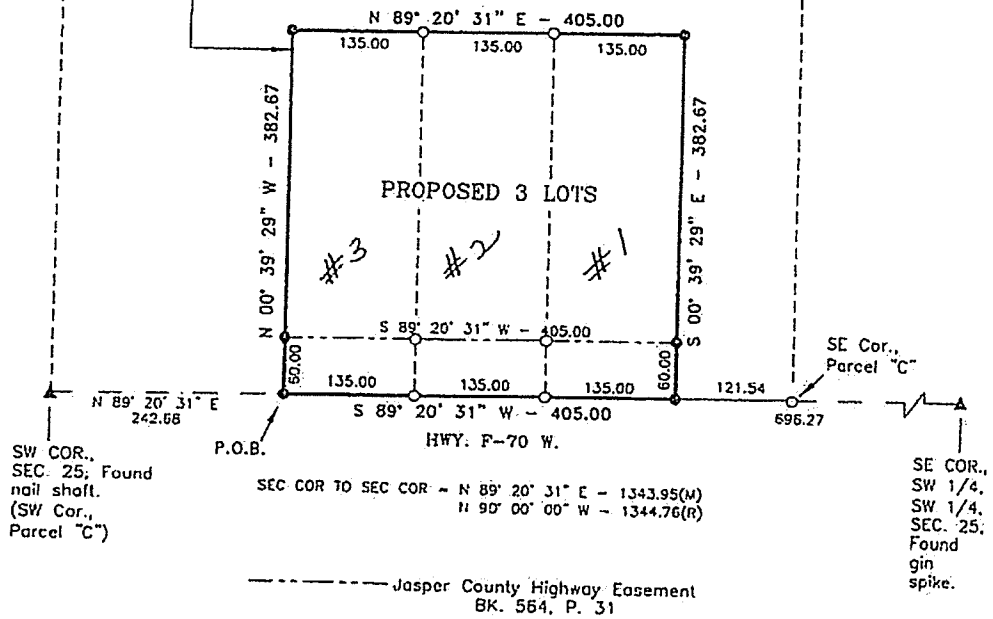
DATE OF SURVEY: 3/29/18

ANNEXATION PLAT
 PART OF PARCEL "C" of the SW 1/4 of the SW 1/4, SEC. 25, T-78N, R-20W
 JASPER COUNTY, IOWA



ANNEXATION
 AREA
 3.56 Acres

PARCEL "C"
 Bk. A, P. 328



101
 102
 103
 104
 105
 106
 107
 108
 109
 110
 111
 112
 113
 114
 115
 116
 117
 118
 119
 120
 121
 122
 123
 124
 125
 126
 127
 128
 129
 130
 131
 132
 133
 134
 135
 136
 137
 138
 139
 140
 141
 142
 143
 144
 145
 146
 147
 148
 149
 150
 151
 152
 153
 154
 155
 156
 157
 158
 159
 160
 161
 162
 163
 164
 165
 166
 00°-00'-00" W, 1672.67'

WEST LINE OF ROAD
 1/2 OF SW 1/4 OF
 SECTION 25-78-20

WEST 1/2 OF SW 1/4 OF
 SECTION 25-78-20

WEST LINE OF ROAD
 1/2 OF SW 1/4 OF
 SECTION 25-78-20

WEST LINE OF ROAD
 1/2 OF SW 1/4 OF
 SECTION 25-78-20

WEST LINE OF ROAD
 1/2 OF SW 1/4 OF
 SECTION 25-78-20

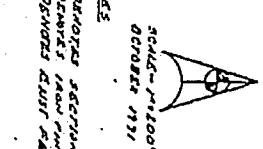
WEST LINE OF ROAD
 1/2 OF SW 1/4 OF
 SECTION 25-78-20

WEST LINE OF ROAD
 1/2 OF SW 1/4 OF
 SECTION 25-78-20

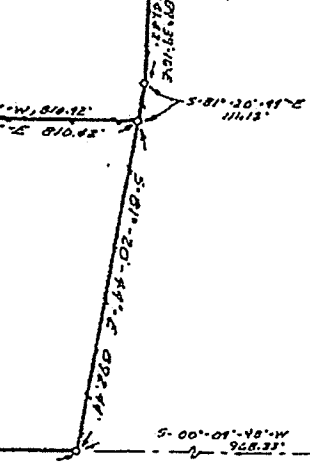
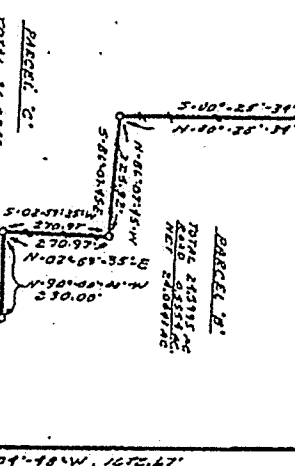
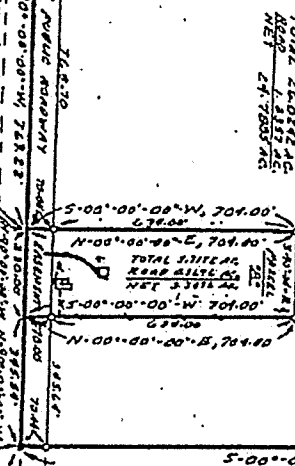
WEST LINE OF ROAD
 1/2 OF SW 1/4 OF
 SECTION 25-78-20

WEST LINE OF ROAD
 1/2 OF SW 1/4 OF
 SECTION 25-78-20

NOTES
 A. APPROX SECTION CORNERS FOUND
 B. CORNERS FROM SW 1/4 SW 1/4
 C. CORNERS FROM SW 1/4 SW 1/4



SCALE - 1" = 100'
 OCTOBER 1931



LEGAL DESCRIPTION - PARCEL A

Beginning at a point being 70.00 ft. E. of the southwest corner of section 25, Township 78 North, Range 20 West of the 5th P.M., Jasper County, Iowa, said point being on the south line of the 5th P.M. of the 5th R. of the 5th T. of said section 25-78-20 and also on the southeast corner of Public Road 1.
 Thence S. 00°-00'-00"-E, 200.00 ft. to a point on the south line of the 5th P.M. of the 5th R. of the 5th T. of said section 25-78-20 and also along the centerline of Public Road 1 to the point of beginning.
 All of said parcel being located in the southwest quarter of the southwest quarter of section 25, Township 78 North, Range 20 West of the 5th P.M., Jasper County, Iowa and contains approximately 1.1777 acres.
 said parcel is subject to an existing Public Highway easement on the south 70.00 ft. thereof. (L. 1888 ACTS)

LEGAL DESCRIPTION - PARCEL B

Beginning at the southeast corner of the southwest quarter of the southwest quarter of section 25, Township 78 North, Range 20 West of the 5th P.M., Jasper County, Iowa, thence S. 00°-00'-00"-E, along the south line of the 5th P.M. of the 5th R. of the 5th T. of said section 25-78-20 and also along the centerline of Public Road 1, 200.00 ft. to a point on the south line of the 5th P.M. of the 5th R. of the 5th T. of said section 25-78-20 and also along the centerline of Public Road 1 to the point of beginning.
 All of said parcel being located in the west one-half of the southwest quarter of section 25, Township 78 North, Range 20 West of the 5th P.M., Jasper County, Iowa and contains approximately 2.0322 acres.
 said parcel is subject to an existing Public Highway easement on the south 70.00 ft. thereof. (L. 1888 ACTS)

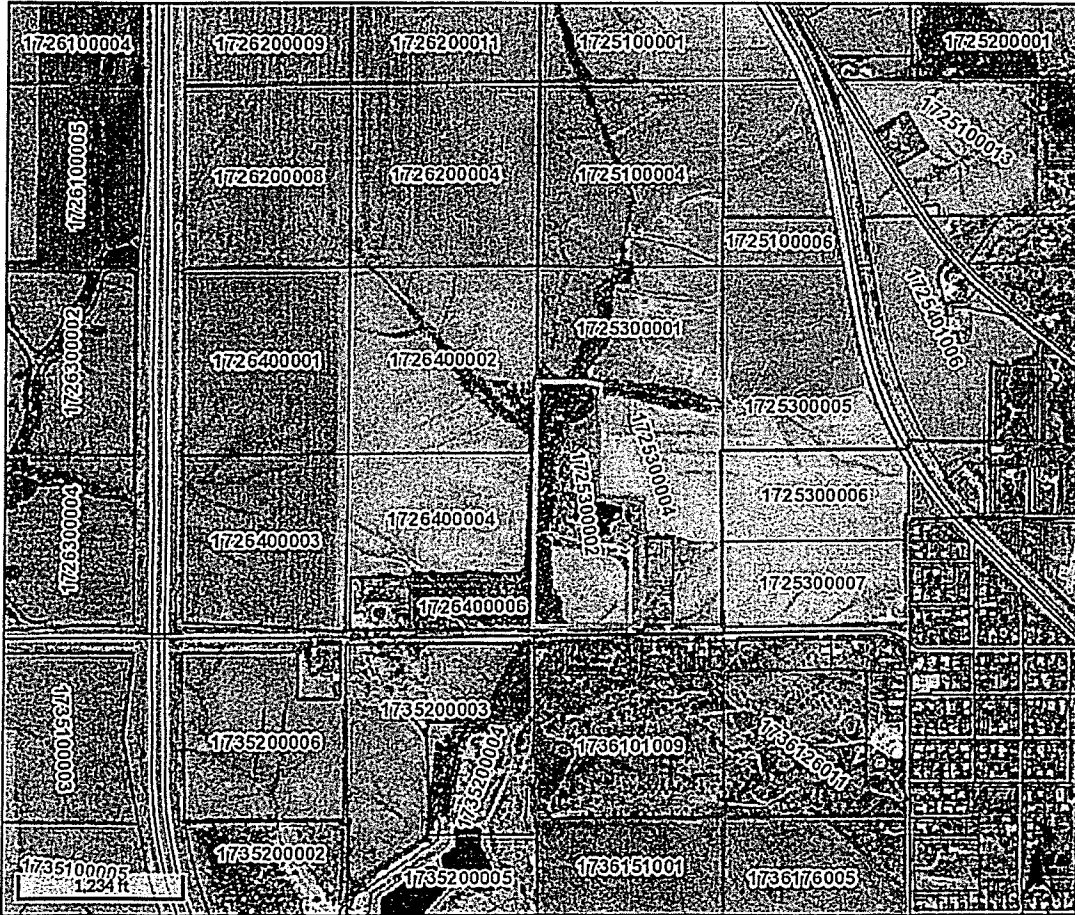
LEGAL DESCRIPTION - PARCEL C

Beginning at the southwest corner of section 25, Township 78 North, Range 20 West of the 5th P.M., Jasper County, Iowa, thence S. 00°-00'-00"-E, along the west line of the 5th P.M. of the 5th R. of the 5th T. of said section 25-78-20, 1672.67 ft. to a point on the south line of the 5th P.M. of the 5th R. of the 5th T. of said section 25-78-20 and also along the centerline of Public Road 1, 200.00 ft. to a point on the south line of the 5th P.M. of the 5th R. of the 5th T. of said section 25-78-20 and also along the centerline of Public Road 1 to the point of beginning.
 All of said parcel being located in the east one-half of the southwest quarter of section 25, Township 78 North, Range 20 West of the 5th P.M., Jasper County, Iowa and contains approximately 2.0322 acres.
 said parcel is subject to an existing Public Highway easement on the south 70.00 ft. thereof. (L. 1888 ACTS)

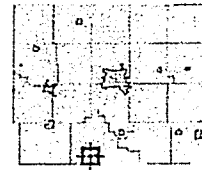
I hereby certify that this plat was prepared by me or under my direct supervision and that I am a duly Registered Professional Surveyor and that my name appears on the plat of the date of issue.
 Henry B. Oakes P.L.S. No. 1122
 Date 10-25-31



PLAT OF SURVEY FOR PUBLIC HIGHWAY
 West West 1/2 of SW 1/4 of Sec. 25-78-20 Jasper County,
 Iowa, 1931
 OAKS ENGINEERING COMPANY
 209 - 6512 Street - Low Moloney Building
 101 - 515 - 255-1777 5012 1002-R-293



Overview



Legend

- Parcels
- Corporate Limits
- Political Township
- Roads**
- <all other values>
- County Hwy
- County Paved
- Federal
- Interstate
- Local

Parcel ID	1725300002	Alternate ID	082860	Owner Address	HJORTSHOJ, DARRELL
Sec/Twp/Rng	25-78-20	Class	AD		PO BOX 412
Property Address	5394 HWY F-70 W MONROE	Acreage	24.79		MONROE IA 50170
District	FVMN				
Brief Tax Description	SECTION:25 TOWNSHIP:78 RANGE:20 PARCEL C OF WEST 1/2 SW (Note: Not to be used on legal documents)				

Jasper County Data Disclaimer

Please Read Carefully

This Jasper County Geographical Information System product contains information from publicly available sources that are subject to constant change. Jasper County makes no warranties or guarantees, either expressed or implied, as to the completeness, accuracy, or correctness of this product, nor accepts any liability arising from any incorrect, incomplete or misleading information contained therein.

The information presented in this product does not replace or modify land surveys, deeds, and/or other legal instruments defining land ownership and use. All drawing components (lines, curves, points, etc.) are created as a representation and should not be construed as actual.

Date created: 10/10/2017
Last Data Uploaded: 3/11/2010 12:31:24 AM

CALDWELL, BRIERLY & CHALUPA, PLLC
ATTORNEYS AND COUNSELORS AT LAW

211 FIRST AVENUE WEST • P.O. BOX 726 • NEWTON, IOWA 50208

GILBERT R. CALDWELL, III
gcaldwell@caldwellandbrierly.com
RANDAL B. CALDWELL
rcaldwcll@lawyeriowa.com
* * *

Telephone: 641-792-4160
Fax: 641-792-2410
www.lawycr Iowa.com

SULLY OFFICE
618 4th STREET
SULLY, IOWA 50251
Phone: 641-594-4420
Thursdays 1:00-3:00 p.m.

Dennis F. Chalupa (1944 - 2013)

November 7, 2018

NOTICE OF CONSULTATION

Jasper County Board of Supervisors
ATTN: Doug Cupples
Jasper County Courthouse
101 First St. N.
Newton, IA 50208

Michael Nolin
11096 Royal Street
Monroe, IA 50170
Trustee of Fairview Township

Caryl Vander Kamp
3284 Rosebud Ave.
Monroe, IA 50170
Trustee of Fairview Township

Paul Hjortshoj
118 N. Taylor Street
Monroe, IA 50170
Trustee of Fairview Township

You are hereby notified that the City of Monroe, Iowa has received an Application for the Voluntary Annexation from Darrell L. Hjortshoj and Karlin Hjortshoj to annex three lots into the City of Monroe, the property legally described as:

See Annexation Plat attached hereto

A copy of Mr. and Mrs. Hjortshoj's Application, including the Annexation Plat, is enclosed as well as copies of the Plat of Survey for Parcel C recorded on February 24, 1992 at Book A Page 328, and a copy of a map showing the location of the property in relationship to the City of Monroe.

A consultation meeting has been scheduled for the 27th day of November, 2018, at 11:00 a.m. It will be held at the Jasper County Board of Supervisors Office in Newton, Iowa.

Very truly yours,

CALDWELL, BRIERLY & CHALUPA, PLLC

By: 

Randal B. Caldwell
Attorneys for the City of Monroe

RBC/ds
Encs.

2018 NOV 13 04:11:55

Application for Voluntary Annexation

In accordance with the Iowa Code Section 368.7, which allows property owner(s) to submit a written request for annexation to the City Council of the adjoining city, I (we) are submitting this Application for Voluntary Annexation. I (we), the undersigned, are the property owners of the property legally described below (or on the attached sheet) and desire to have the described property annexed to the City of Monroe, Jasper County, Iowa.

Legal Description of Property: Insert a typed legal description below. If the description will not fit, type "see attached" in the box and attach a typed legal description on a separate sheet of paper.

General Property Location:

Property Owners:

Darrell L. Hjortskj 10-10-18
Signature (Owner 1) Date

Typed Name: _____

Kerlin Hjortskj 10-10-18
Signature (Owner 2) Date

Typed Name: _____

Are there additional owners? NO

If yes, please provide names, signatures, and dates of signatures for additional owners on a separate sheet.

For City Staff Use Only:

Case Name:

Case Number:

Date Received:

November 27, 2018

Tuesday, November 27, 2018 the Jasper County Board of Supervisors met in regular session at 9:30 a.m. Supervisors Carpenter and Cupples present and accounted for; Chairman Cupples presiding.

Motion by Cupples and seconded by Carpenter to approve the transfer of \$6,272.27 in insurance claims from the general fund to the Engineer's Office to pay for fixing a truck that was in an accident.

YEA: CARPENTER & CUPPLES

Motion by Cupples and seconded by Carpenter to adopt Resolution 18 – 77 to sign and approve final plans for submittal to the Iowa DOT for Letting on Projects BRS-SWAP-C050(120)-FF-50, the bridge replacement on F48 over Prairie Creek in Sherman Township and BRS-SWAP-C050(121)-FF-50, the bridge replacement on F48 over Cherry Creek in Newton Township.

YEA: CARPENTER & CUPPLES

A complete copy of the resolution is on file in the Office of the Jasper County Auditor.

Motion by Carpenter and seconded by Cupples to adopt Resolution 18 - 78 creating the position of full-time shared maintenance technician.

YEA: CUPPLES & CARPENTER

A complete copy of the resolution is on file in the Office of the Jasper County Auditor.

Motion by Carpenter and seconded by Cupples to table agenda item #3 County Farm a) wash out.

YEA: CUPPLES & CARPENTER

Motion by Cupples and seconded by Carpenter to adopt Resolution 18 – 79 to approve Transfer Order #1408 transferring \$37,446.98 from 0802 Amended JC 28E Sub-fund to 2012 – (2012B) and 2015 (2007) TPI Refunded for debt payment on the TPI/Opus Economic Development Grant.

YEA: CARPENTER & CUPPLES

A complete copy of the resolution is on file in the Office of the Jasper County Auditor.

Motion by Cupples and seconded by Carpenter to adopt Resolution 18 – 80 to approve Transfer Order #1409 transferring \$11,560.00 from the 0810 - Colfax Interchange fund to the 2011 – (2012A) Debt fund for debt payment.

YEA: CARPENTER & CUPPLES

A complete copy of the resolution is on file in the Office of the Jasper County Auditor.

Motion by Cupples and seconded by Carpenter to adopt Resolution 18 – 81 to approve Transfer Order #1410 transferring \$18,591.50 from the General Fund to 1525-LEC Capital Project Fund.

YEA: CARPENTER & CUPPLES

A complete copy of the resolution is on file in the Office of the Jasper County Auditor.

Motion by Cupples and seconded by Carpenter to approve the Annual Urban Renewal Report for Fiscal Year 2018.

YEA: CARPENTER & CUPPLES

Motion by Cupples and seconded by Carpenter to approve the Board of Supervisors minutes for 11/20/2018.

YEA: CARPENTER & CUPPLES

Motion by Carpenter and seconded by Cupples to adjourn the November 27, 2018 meeting of the Jasper County Board of Supervisors.

YEA: CUPPLES & CARPENTER

Dennis K. Parrott, Auditor

Doug Cupples, Chairman