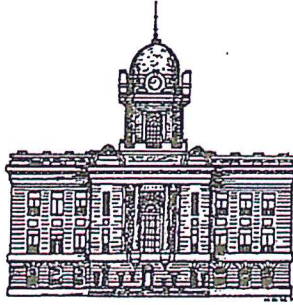


Jasper County, Iowa

Denny Carpenter

Doug Cupples

Brandon Talsma



Board of Supervisors

Courthouse

PO Box 944

Newton IA 50208

Phone 641-792-7016

Fax 641-792-1053

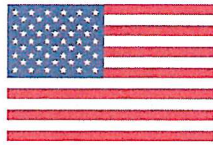
JASPER COUNTY BOARD OF SUPERVISORS MEETING AGENDA

www.jasperia.org

January 7th 2020

9:30am

Pledge of Allegiance



- Item 1 Board of Supervisors**
 - a) Organization of the Board**
 - b) Resolution Establishing Board Members**
 - c) Designation of Official Newspapers**

- Item 2 Lynnville Sully Lego League – Team Error 404**

- Item 3 Human Resources – Dennis Simon**
 - a) 2020 Mileage Reimbursement**
 - b) Resolution to Create Permanent full-time Position, of Finance and Office Manager for Jasper County Engineer’s Office**

- Item 4 Engineer – Russ Stutt**
 - a) Approve Resolution and sign plans for bridge replacement on F24**
 - b) Approve Resolution for FY2021 Resurfacing low bid and contract signing**

- Item 5 Approval of Board of Supervisors Minutes for 12/31/2019**

- Item 6 Approval of Claims for Period ending 1/03/20 & 1/07/20**

- Item 7 Board Appointments**

PUBLIC INPUT & COMMENTS



IRS issues standard mileage rates for 2020

IR-2019-215, December 31, 2019

WASHINGTON — The Internal Revenue Service today issued the 2020 optional standard mileage rates (PDF) used to calculate the deductible costs of operating an automobile for business, charitable, medical or moving purposes.

Beginning on January 1, 2020, the standard mileage rates for the use of a car (also vans, pickups or panel trucks) will be:

- 57.5 cents per mile driven for business use, down one half of a cent from the rate for 2019,
- 17 cents per mile driven for medical or moving purposes, down three cents from the rate for 2019, and
- 14 cents per mile driven in service of charitable organizations.

The business mileage rate decreased one half of a cent for business travel driven and three cents for medical and certain moving expense from the rates for 2019. The charitable rate is set by statute and remains unchanged.

It is important to note that under the Tax Cuts and Jobs Act, taxpayers cannot claim a miscellaneous itemized deduction for unreimbursed employee travel expenses. Taxpayers also cannot claim a deduction for moving expenses, except members of the Armed Forces on active duty moving under orders to a permanent change of station. For more details, see Rev. Proc. 2019-46 (PDF).

The standard mileage rate for business use is based on an annual study of the fixed and variable costs of operating an automobile. The rate for medical and moving purposes is based on the variable costs.

Taxpayers always have the option of calculating the actual costs of using their vehicle rather than using the standard mileage rates.

A taxpayer may not use the business standard mileage rate for a vehicle after using any depreciation method under the Modified Accelerated Cost Recovery System (MACRS) or after claiming a Section 179 deduction for that vehicle. In addition, the business standard mileage rate cannot be used for more than five vehicles used simultaneously. These and other limitations are described in section 4.05 of Rev. Proc. 2019-46 (PDF).

Notice 2020-05 (PDF), posted today on IRS.gov, contains the standard mileage rates, the amount a taxpayer must use in calculating reductions to basis for depreciation taken under the business standard mileage rate, and the maximum standard automobile cost that a taxpayer may use in computing the allowance under a fixed and variable rate plan. In addition, for employer-provided vehicles, the Notice provides the maximum fair market value of automobiles first made available to employees for personal use in calendar year 2020 for which employers may use the fleet-average valuation rule in § 1.61-21(d)(5)(v) or the vehicle cents-per-mile valuation rule in § 1.61-21(e).

Page Last Reviewed or Updated: 31-Dec-2019

Resolution 20-

WHEREAS, The Jasper County Engineer's Department has the need for and has requested that the Jasper County Board of Supervisors create a permanent full-time position of Finance and Office Manager.

*This position is designed to replace the current position of Assistant to the Engineer. Upon approval, the position of Assistant to the Engineer will be dissolved when the current employee retires.

NOW, THEREFORE BE IT RESOLVED that the Jasper County Board of Supervisors shall create the permanent full-time position of Finance and Office Manager.

Resolution adopted this 7th day of January, 2020.

, Chairman

Attest:

Dennis Parrott, Auditor

RECORDED IN BOARD OF SUPERVISORS MINUTES

BOOK 21

1/7/2020

PAGE

Resolution No. _____

RESOLUTION OF FINAL PLAN SUBMITTAL FOR
PROJECT NUMBER BRS-SWAP-C050(124)—FF-50

Moved by, _____ seconded by, _____

To sign and approve Final Plans for an April 21, 2020 D.O.T Letting on project BRS-SWAP-C050(124)—FF-50, Pretensioned Prestressed Concrete Beam Bridge on County Road F24 over Indian Creek laying between Sections 34-81N-21W in Clear Creek Township and Section 3-80N-21W in Poweshiek Township, Jasper County, Iowa.

AYES: _____

NAYS: _____

Approved this 7th day of January, 2020.

Dennis Carpenter
Chairman Board of Supervisors

Brandon Talsma
Board of Supervisors

Doug Cupples
Board of Supervisors

ATTEST: _____

Dennis Parrott
Jasper County Auditor

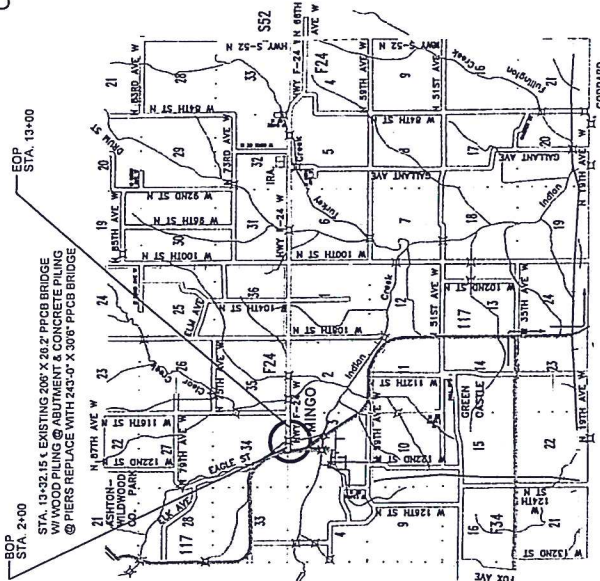
SECTION 404 PERMIT AND CONDITIONS 281-1
 10-18-18

Construct this project according to the requirements of U.S. Army Corps of Engineers, National Wetlands Permit No. CEAVR-OD-P-2019-0450. A copy of this permit is available from the Iowa DOT website (<http://www.enrpermits.iowadot.gov>). The U.S. Army Corps of Engineers reserves the right to visit the site without prior notice.

This project is covered by Iowa DNR Floodplain Construction Permit No. (insert Iowa DNR permit number).

REFER TO THE PROPOSAL FORM FOR LIST OF APPLICABLE SPECIFICATIONS. THE CONTRACTOR IS REQUIRED TO CONTACT "ONE CALL" AT (800) 252-8999 TO OBTAIN LOCATIONS FOR ALL EXISTING UTILITIES.

WORKING DRAWINGS AND FALSEWORK PLANS AND CALCULATIONS SHALL BE CERTIFIED BY A PROFESSIONAL ENGINEER REGISTERED IN THE STATE OF IOWA. FALSEWORK PLANS SHALL INCLUDE AN ESTIMATE FOR SETTLEMENT OF FORMS, PLANS, DRAWINGS AND CALCULATIONS TO BE SENT TO: JASPER COUNTY ENGINEER, 911 NORTH 117TH AVE, SE-51, NEWTON, IOWA 52068



IOWA
 DEPARTMENT OF TRANSPORTATION
 HIGHWAY DIVISION
 PLANS OF PROPOSED IMPROVEMENT ON THE
FARM TO MARKET SYSTEM
JASPER COUNTY
 BRS-SWAP-CO50(124)--FF-50
BRIDGE REPLACEMENT - PPCB
 ON COUNTY ROAD F24, OVER NORTH INDIAN CREEK APPROX.
 500 FEET EAST OF STATE HWY 117
 FHWA NO. 198460

JASPER COUNTY BOARD OF SUPERVISORS

Supervisor	Daib
Supervisor	Daib
Supervisor	Daib

I HEREBY CERTIFY THAT THIS ENGINEERING DOCUMENT WAS PREPARED BY ME OR UNDER MY DIRECT PERSONAL SUPERVISION AND THAT I AM A DULY LICENSED PROFESSIONAL ENGINEER UNDER THE LAWS OF THE STATE OF IOWA.

BY: _____ DATE: _____

RUSSELL A. STUTT, P.E. 18165
 MY LICENSE RENEWAL DATE IS DEC. 31, 2020

SHEETS COVERED BY THIS SEAL: _____
 (ENTIRE SUBMISSION UNLESS SPECIFIED HERE)



INDEX OF SHEETS

NO	DESCRIPTION
1	TITLE SHEET
2	QUANTITIES
3	GENERAL NOTES
4	SITUATION PLAN, LONGITUDINAL SECTION, AND HYDRAULIC DATA
5	GENERAL PLAN
6,7	SOUNDING DATA
8	SUPERSTRUCTURE DETAILS, TYPICAL SECTIONS
9	TABULATIONS
10,11,12,13,14	CROSS SECTIONS

MILEAGE SUMMARY

DIV.	LOCATION	END STA.	19+00	LIN. FT.	MILES
BGN.	STA. 2+00			1100	0.209

STANDARD BRIDGE PLANS
 THE FOLLOWING STANDARD PLANS SHALL BE CONSIDERED APPLICABLE TO CONSTRUCTION WORK ON THIS PROJECT

STANDARD	DATE	STANDARD	DATE
H30-D1-06	04-13	H30-D1-06	05-11
H30-D1A-06	04-13	H30-SB-06	07-10
H30-D2-06	04-13	H30-SB-06	07-10
H30-D3-06	06-12	H30-SB-06	07-10
H30-D4-06	06-12	H30-SB-06	07-10
H30-D5-06	04-13	H30-SB-06	07-10
H30-D6-06	01-12	H30-SB-06	07-10
H30-D7-06	07-15	H30-SB-06	07-10

STANDARD ROAD PLANS
 THE FOLLOWING STANDARD PLANS SHALL BE CONSIDERED APPLICABLE TO CONSTRUCTION WORK ON THIS PROJECT

STANDARD	DATE	STANDARD	DATE
BA-200	04-18-16	EW-401	10-20-15
BA-201	04-18-17	LS-623	04-19-16
BA-202	10-20-15	LS-630	10-18-16
BR-101	04-21-15	PV-101	10-16-16
BR-102	10-17-17	SL-173	04-18-16
EC-201	10-16-16	SL-171	10-18-16
EC-204	04-18-17	TC-252	04-18-16
ET-301	10-20-15		

UTILITY CONTACT INFORMATION

UTILITY COMPANY NAME	PHONE	CONTACT EMAIL
Iowa Regional Utility Association	841-792-7011	irmorgan@iuaa.com
Midamerican Energy	515-252-6532	MEDCSMDesignLocates@midamerican.com
Midamerican Gas	515-252-6532	MEDCSMDesignLocates@midamerican.com
Weststream Communications	800-269-1901	LOCATE.DESK@WINDSTREAM.COM

ESTIMATED PROJECT QUANTITIES

NO.	ITEM	UNIT	QUANTITY
1	2101-0850001	ACRE	1
2	2102-2710070	CY	4554.81
3	2104-2710020	CY	267
4	2121-7430520	TON	496
5	2301-0690210	SY	2145.67
6	2314-4325700	STA	7.5
7	2315-8275025	TON	120
8	2401-6745625	EACH	1
9	2402-2720000	CY	122
10	2403-0100010	CY	432.2
11	2404-7775005	LB	100.949
12	2407-0551380	EACH	15
13	2408-7800000	LB	4122
14	2414-6424124	LF	540
15	2417-0330024	EACH	3
16	2417-1040024	LF	130
17	2501-0201057	LF	2250
18	2501-5335010	LF	180
19	2505-4008300	LF	150
20	2505-4008410	EACH	4
21	2505-4021010	EACH	4
22	2505-4021710	EACH	4
23	2507-3250005	SY	1100
24	2507-6800061	TON	892
25	2510-6745650	SY	2055.2
26	2516-6910000	LS	1
27	2526-8285000	LS	1
28	2528-8445110	LS	1
29	2533-4980005	LS	1
30	2601-2634100	LS	1
31	2601-2636043	ACRE	2.2
32	2602-0000020	ACRE	2.2
33	2602-0000030	LF	1100
34	2602-0000101	LF	180
35	2602-0000312	LF	1260
36	2602-0010010	LF	600
37	2602-0010020	EACH	1

NO. BID ITEM NOTES

- THE CONTRACTING AUTHORITY HAS CUT DOWN TREES GREATER THAN 9" IN DIAMETER DUE TO THE POTENTIAL FOR THESE TREES BEING INHABITED BY THE INDIANA BAT (MYOTIS SODALIS). THE CONTRACTOR WILL BE REQUIRED TO REMOVE THE DOWN TREES, GRUB THE STUMPS AND CLEAR AND GRUB THE REMAINING TREES.
ANY LIVING, DEAD, CUT OR FALLEN MATERIAL OF THE ASH (FRAXINUS SPP.) INCLUDING TREES, NURSERY STOCK, LOGS, FIREWOOD, STUMPS, ROOTS, BRANCHES, AND COMPOSTED OR UNCOMPOSTED ASH CHIPS CAN BE FREELY MOVED WITHIN THE YELLOW AREAS OF THE MOST RECENT FEDERAL EAB QUARANTINE & AUTHORIZED TRAVEL
HTTPS://WWW.APHIS.USDA.GOV/PLANT_HEALTH/PLANT_PEST_INFO/EMERALD_ASH_BIDOWNLOADS/EAB_QUARANTINE_MAP.PDF.
OBTAIN APPROPRIATE COMPLIANCE AGREEMENTS FROM USDA APHIS PRO PRIOR TO MOVING ANY OF THE ABOVE LISTED ASH ARTICLES TO AREAS OUTSIDE THE YELLOW ZONE ON THE MAP. FOR QUESTIONS, CONCERNS, AND GENERAL ASSISTANCE, CONTACT: USDA APHIS PPQ, IOWA OFFICE, 515-414-3295 OR IOWA DEPARTMENT OF AGRICULTURE & LAND STEWARDSHIP 515-725-1470 ENTOMLOGY@IOWA.AGRICULTURE.GOV
- TYPE "A" COMPACTION REQUIRED. QUANTITY DOES NOT COMPENSATE FOR SHRINKAGE. AFTER ALL AVAILABLE MATERIAL ON SITE HAS BEEN DEPLETED, THE CONTRACTOR SHALL FURNISH ALL REMAINING REQUIRED.
NO PAYMENT FOR OVERHAUL SHALL BE MADE ON THIS PROJECT.
- INCLUDES COSTS TO EXCAVATE CHANNEL AND SHAPE TO EXTENTS SHOWN ON LONGITUDINAL SECTION ALONG CENTERLINE OF ROADWAY AND THE LIMITS SHOWN ON THE SITUATION PLAN. SUITABLE MATERIAL MAY BE USED TO CONSTRUCT ABUTMENT BERMS, GUARDRAIL, BLISTERS OR BE WASTED ON APPROACH ROADWAY FORESLOPES AS DIRECTED BY THE ENGINEER.
- SEE TYPICAL SECTION AND TABULATION SHEET 9.
- SEE TABULATION SHEET 9 AND STANDARD ROAD PLANS BR-102. COARSE AGGREGATE DURABILITY SHALL BE CLASS 3 OR BETTER. CERTIFIED PLANT INSPECTION IS REQUIRED.
- CONTRACTOR TO PROVIDE DUST CONTROL ON WEST 108TH STREET NORTH FROM F24 SOUTH TO HWY 117. CONTRACTOR TO MAINTAIN DUST CONTROL THROUGH THE COMPLETION OF THE PROJECT. METHOD OF MEASUREMENT AND BASIS OF PAYMENT WILL BE ON STATIONS OF APPLICATION. SEE SITUATION PLAN SHEET 4 FOR LOCATION OF RELOCATE ENTRANCES. GRANULAR MATERIAL TO BE PLACED AT A THICKNESS OF 4".

- REMOVE EXISTING 206" x 28.2" PPCB BRIDGE W/ WOOD PILING @ ABUTMENTS & CONCRETE PILING @ PIERS. ALL MATERIAL TO BE REMOVED FROM SITE BY CONTRACTOR AND BECOME PROPERTY OF CONTRACTOR.
SCAPE SAMPLES WERE TAKEN OF THIS BRIDGE TO GET AN INDICATION OF THE EXISTENCE OF AND LEVEL OF TOTAL CHROMIUM AND TOTAL LEAD. THE ANALYSIS OF TOTAL CHROMIUM IN THE SAMPLE WAS 307 MG/KG. THE ANALYSIS OF TOTAL LEAD IN THE SAMPLE WAS 95.400 MG/KG. THE ANALYSIS SHOWS THE EXISTENCE OF THESE TWO TOXIC CONSTITUENTS. THE LEVELS INDICATED BY THESE TESTS COULD CREATE CONDITIONS ABOVE REGULATORY LIMITS FOR HEALTH SAFETY REQUIREMENTS. NO OTHER SUBSTANCES WERE ANALYZED. THE BIDDER SHOULD NOT RELY ON THE CONTRACTING AUTHORITIES TESTING FOR ANY PURPOSE OTHER THAN THE INDICATION OF THE EXISTENCE OF THESE TWO CONSTITUENTS.
- CLASS 20 EXCAVATION MAY BE USED TO CONSTRUCT THE ABUTMENT BERM, OR BE WASTED ON THE APPROACH ROADWAY FORESLOPES - SUITABLE SOILS SHALL BE AS DEFINED BY ARTICLE 2102.02.D.2 OF THE STANDARD SPECIFICATIONS. UNSUITABLE SOIL SHALL BE WASTED OFF SITE.
- ALL STRUCTURAL CONCRETE IS CLASS "C". CERTIFIED PLANT INSPECTION IS REQUIRED AND IS INCLUDED IN THIS ITEM. INCLUDES FURNISHING AND PLACING SUBDRAIN (INCLUDING EXCAVATION), GRANULAR BACKFILL, POROUS BACKFILL, AND SUBDRAIN OUTLETS AT ABUTMENTS. INCLUDES ALL PREFORMED EXPANSION JOINT FILLER REQUIRED. NO ADDITIONAL PAYMENT FOR HEATING AND PROTECTION OF CONCRETE WILL BE ALLOWED, IF NECESSARY.
- ALL REINFORCING STEEL SHALL BE GRADE 60.
- INCLUDES COST OF ALL BEARING MATERIAL FOR EAST EXPANSION PIER, WEST FIXED PIER AND BOTH ABUTMENTS. COIL TIES AND COIL RODS. SEE PIER BEARING DETAILS ON SHEET H30-44-06. THE CONTRACTOR SHALL BE RESPONSIBLE FOR ENSURING THE STABILITY OF THE PRESTRESSED CONCRETE BEAMS DURING ERECTION AND CONSTRUCTION UP THROUGH THE CONCRETE BRIDGE DECK REACHING ITS FULL 28 DAY STRENGTH. THE CONTRACTOR SHALL PROVIDE SUFFICIENT TEMPORARY ANCHOR BRACING AT BEAM ENDS AND INTERMEDIATE BRACING AS NEEDED TO ENSURE STABILITY. TEMPORARY BRACING SHALL NOT BE WELDED TO PRESTRESSED BEAM STRIRUPS.
- INCLUDES WEIGHT OF DIAPHRAGMS SEE STANDARD SHEET H30-38-06.
- ALL STRUCTURAL CONCRETE FOR THE RAIL IS CLASS "C". CERTIFIED PLANT INSPECTION IS REQUIRED AND IS INCLUDED IN THIS ITEM. NO ADDITIONAL PAYMENT FOR HEATING AND PROTECTION OF CONCRETE WILL BE ALLOWED, IF NECESSARY.
- ALL PIPE SHALL BE STANDARD CORRUGATIONS. NO HELICALLY CORRUGATED PIPE WILL BE ALLOWED. ALL CONNECTION BANDS SHALL BE 24" WIDE.
- EACH ABUTMENT 9 HP10X57X70, EACH PIER FOOTING 11 HP10X57X45. SEE PILE NOTES ON SHEET 5. PILE POINTS SHALL NOT BE USED
- SEE TABULATION SHEET 9 AND STANDARD ROAD PLANS.
- EXTENTS SHOWN ON SHEET 4
- EXTENTS SHOWN ON SHEET 4. REVETMENT TO BE PLACED AT A THICKNESS OF 1'-6"
- SEE TABULATION SHEET 9. EXISTING PAVEMENT CONSISTS OF 12" PCC WITH A 2" HMA OVERLAY. IN ORDER TO AVOID ANY UNNECESSARY SURFACE BREAKS OR PREMATURE SPALLING, THE CONTRACTOR IS CAUTIONED TO USE EXTREME CARE WHEN PERFORMING ANY OF THE NECESSARY SAW CUTTING OPERATIONS FOR THE PROPOSED PAVEMENT REMOVAL. SAW CUTS ARE TO BE MADE AT THE STATION INDICATED OR AT THE NEAREST TRANSVERSE JOINT AS DIRECTED BY THE ENGINEER.
- SEE TABULATION SHEET 9
- THE CONTRACTOR IS RESPONSIBLE FOR CONDUCTING AN INDEPENDENT CHECK OF ALL CONSTRUCTION STAKES PLACED FOR THE PROJECT. THIS INDEPENDENT CHECK SHALL BE SUFFICIENT TO UNDERSTANDING THE PLACEMENT AND INTENT OF THE STAKES. THE CONTRACTING AUTHORITY WILL PROVIDE FIELD TIES TO THE SITE SURVEY AT THE TIME OF CONSTRUCTION.
- CONTRACTING AUTHORITY TO PROVIDE ALL DETOUR ROUTE SIGNAGE. ROAD WILL BE CLOSED TO TRAFFIC DURING CONSTRUCTION SEE SHEET 9 FOR DETAILS.
- THE CONTRACTOR IS TO RESHAPE, FERTILIZE, SEED AND MULCH ANY AREAS DISTURBED DURING CONSTRUCTION TO THEIR ORIGINAL CONDITION. THIS SHALL BE INCLUDED IN THE PRICES FOR "SEEDING AND FERTILIZING (RURAL)
- SEE TABULATION SHEET 9 AND STANDARD ROAD PLANS.

DESIGN FOR 0° SKEW

243'-0" x 30'-6" PRETENSIONED
PRESTRESSED CONCRETE BEAM BRIDGE
INTEGRAL ABUTMENTS
81'-0" END SPANS

QUANTITIES
81'-0" INTERIOR SPAN

STA. 6+80.98 HWY F24W OVER INDIAN CREEK DECEMBER 2019

JASPER COUNTY
IOWA DEPARTMENT OF TRANSPORTATION-HIGHWAY DIVISION

PROJECT NUMBER: BRS-SWAP-C050(124)-FF-50

DESIGN: AASHTO LRFD 6TH EDITION, WITH INTERIMS THROUGH 2013
CONSTRUCTION: THE IOWA DEPARTMENT OF TRANSPORTATION STANDARD SPECIFICATIONS FOR HIGHWAY AND
BRIDGE CONSTRUCTION SERIES 2012, PLUS GENERAL SUPPLEMENTAL SPECIFICATIONS, AND APPLICABLE
SUPPLEMENTAL SPECIFICATIONS, DEVELOPMENTAL SPECIFICATIONS, AND SPECIAL PROVISIONS, SHALL APPLY TO
THE CONSTRUCTION ON THIS PROJECT

DESIGN STRESSES
DESIGN STRESSES FOR THE FOLLOWING MATERIALS ARE IN ACCORDANCE WITH THE AASHTO LRFD BRIDGE DESIGN
SPECIFICATIONS, 6TH EDITION, MATHEMATICS THROUGHOUT SECTION 5, GRADE 60
REINFORCING STEEL IN ACCORDANCE WITH LRFD SECTION 5, ASTM A709 GRADE 50 (AASHTO M270 GRADE
36) OR ASTM A36
STRUCTURAL STEEL IN ACCORDANCE WITH LRFD AASHTO SECTION 5, F.C.=4.000 PSI EXCEPT PRESTRESSED BEAM CONCRETE
AS NOTED
CONCRETE IN ACCORDANCE WITH LRFD AASHTO SECTION 5, F.C.=4.000 PSI EXCEPT PRESTRESSED BEAM CONCRETE
PRESTRESSING STEEL SEE SHEETS H24-32-06 PRESTRESSED CONCRETE SEE SHEETS H24-32-06

GENERAL NOTES
THIS DESIGN IS FOR A 243'-0" x 30'-6" PRETENSIONED PRESTRESSED CONCRETE BEAM BRIDGE ON HWY. F24 WEST
OVER INDIAN CREEK, JASPER COUNTY, IOWA.
THIS BRIDGE IS DESIGNED FOR HL-93 LOADING PLUS 20 LB. PER SQ. FT. OF ROADWAY FOR FUTURE WEARING
SURFACE
ACCESS SHALL BE MAINTAINED TO INDIVIDUAL PROPERTIES DURING CONSTRUCTION. THIS WORK SHALL BE
CONSIDERED INCIDENTAL TO THE PROJECT.
THE PRIME CONTRACTOR SHALL EMPLOY CONTROLS TO REDUCE THE EROSION/WEAR OF LAND ADJACENT TO
SURFACE WATERS AND WETLANDS, INCLUDING ESTABLISHMENT AND MAINTENANCE OF EROSION CONTROL DURING
AND AFTER CONSTRUCTION AND REVEGETATION OF ALL DISTURBED AREAS UPON PROJECT COMPLETION. THE
PRIME CONTRACTOR SHALL BE RESPONSIBLE FOR INSTALLATION OF ALL EROSION CONTROL MEASURES.

STANDARD ROAD PLANS ARE AVAILABLE FROM THE IOWA DEPARTMENT OF TRANSPORTATION WEBSITE:
<http://www.iowadot.gov/letinfo/docs.html>

UTILITY NOTES
SEE SECTION 1107.15 OF THE STANDARD SPECIFICATION REGARDING UTILITY COORDINATION.
WASTE AND DISPOSAL NOTES
IT SHALL BE THE CONTRACTOR'S RESPONSIBILITY TO PROVIDE WASTE AREAS OR DISPOSAL SITES FOR EXCESS
MATERIAL (EXCAVATED MATERIAL OR BROKEN CONCRETE) WHICH IS NOT DESIRABLE TO BE INCORPORATED INTO
ROADS ON THIS PROJECT. IT SHALL BE THE CONTRACTORS RESPONSIBILITY TO ENSURE THAT AREAS
(INCLUDING HULL POUNDS OR OTHER AREAS) NOT BE USED FOR DISPOSAL OF CULTURALLY SENSITIVE SITES OR
GRAVES OR 2) WETLANDS OR WATERS OF THE U.S. DISPOSAL SHALL BE IN UNDESIRABLE BANKS BELOW THE PERMIT
"ORDINARY HIGH WATER MARK" WITHOUT AN APPROVED U.S. ARMY CORPS OF ENGINEERS PERMIT.
NO PAYMENT FOR OVERHAUL WILL BE ALLOWED FOR MATERIAL HAULED TO THESE SITES. NO MATERIAL SHALL BE
PLACED WITHIN THE RIGHT-OF-WAY, UNLESS SPECIFICALLY STATED IN THE PLANS OR APPROVED BY THE
ENGINEER.

HAZARDOUS MATERIALS NOTES
THE CONTRACTOR SHALL CONDUCT THEIR OPERATIONS IN SUCH A MANNER THAT ANY PAINT REMOVED
DURING THIS PROJECT IS CONTAINED, COLLECTED, AND DISPOSED OF IN ACCORDANCE WITH SECTION 2508 OF THE
STANDARD SPECIFICATIONS.
BEFORE DELIVERY OF ANY SCRAP STEEL, THE CONTRACTOR SHALL PROVIDE A WRITTEN NOTICE TO THE
RECEIVING FACILITY. THIS NOTICE SHALL AT A MINIMUM INCLUDE:
1. A NOTICE THAT THE SCRAP STEEL IS COATED WITH PAINT THAT HAS REGULATED MATERIALS AT LEVELS THAT
COULD BE HAZARDOUS TO EMPLOYEES OR THE ENVIRONMENT.
2. A COPY OF THE SCRAPE SAMPLE PROVIDED IN THE CONTRACT DOCUMENTS.
3. A SIGNATURE BLOCK FOR THE RECEIVING FACILITY TO CONFIRM THEIR RECEIPT OF THIS INFORMATION. A
COPY OF THIS NOTICE, SIGNED BY THE RECEIVING FACILITY, SHALL BE RETURNED TO THE ENGINEER BEFORE ANY
SCRAP STEEL IS REMOVED FROM THE PROJECT. ALL COSTS ASSOCIATED WITH COMPLIANCE WITH THE ABOVE
REMOVAL AND DISPOSAL REQUIREMENTS WILL BE INCIDENTAL TO "REMOVAL OF EXISTING BRIDGE".

STREAM CROSSING NOTES
THE CONTRACTOR IS ENCOURAGED TO CONDUCT CONSTRUCTION ACTIVITIES DURING A PERIOD OF LOW FLOW.
ANY TEMPORARY CROSSINGS SHALL INCLUDE ENOUGH CULVERTS TO ACCOMMODATE LOW FLOWS. MUST BE
REMOVED AFTER COMPLETION OF WORK ON THIS PROJECT. TEMPORARY STREAM CROSSINGS SHALL BE
CONSTRUCTED IN ACCORDANCE WITH STANDARD ROAD PLAN EW-401. THE COST OF INSTALLATION, MAINTENANCE
AND REMOVAL OF TEMPORARY CROSSINGS INCLUDING CULVERTS, SHALL BE INCLUDED IN THE PRICE BID FOR
"MOBILIZATION".
EQUIPMENT FOR HANDLING AND CONVEYING MATERIALS DURING CONSTRUCTION SHALL BE OPERATED TO
PREVENT DUMPING OR SPILLING THE MATERIAL INTO WATERBODIES, STREAMS OR WETLANDS.
MATERIALS FROM EXTERIOR WATERSHEDS OR WETLANDS, INCLUDING PETROLEUM PRODUCTS, CHEMICALS OR OTHER DELETERIOUS
MATERIALS FROM EXTERIOR WATERSHEDS OR WETLANDS,
CONSTRUCTION EQUIPMENT, ACTIVITIES AND MATERIALS SHALL BE KEPT OUT OF THE STREAMS, WATERBODIES
AND WETLANDS TO THE MAXIMUM EXTENT POSSIBLE.

CONCRETE AND REINFORCING STEEL NOTES
CONCRETE FORMS ARE TO REMAIN IN PLACE 5 DAYS OR LONGER IN ACCORDANCE WITH ARTICLE 2403.03, M. 2 OF
THE STANDARD SPECIFICATIONS. EXCEPT THE MINIMUM CONCRETE FLEXURAL STRENGTH REQUIRED BEFORE
REMOVAL OF FORMS SHALL BE 975 PSI.
ALL REINFORCING STEEL SHALL BE SECURELY WIRED IN PLACE BEFORE CONCRETE IS PLACED. BAR CHAIRS
SPACING AT NOT IN THAN 3'-0" CENTERS IN EITHER DIRECTION SHALL BE USED TO SUPPORT ALL REINFORCING IN
ACCORDANCE WITH THE SECTION 2404 OF STANDARD SPECIFICATIONS.
CLEAR DISTANCE FROM FACE OF CONCRETE TO NEAR REINFORCING BAR IS TO BE 2" UNLESS OTHERWISE
NOTED OR SHOWN.
ALL EXPOSED CORNERS 90 DEGREES OR SHARPER ARE TO BE FILLETED WITH A 3/4" DRESSED AND BEVELED
STRIP.
ALL REINFORCING BARS AND BARS NOTED AS DOWELS SUPPLIED FOR THIS STRUCTURE SHALL BE DEFORMED
REINFORCEMENT UNLESS OTHERWISE NOTED OR SHOWN.
KEYWAY DIMENSIONS SHOWN ON THE PLANS ARE BASED ON NOMINAL DIMENSIONS UNLESS STATED
OTHERWISE. IN ADDITION BEVEL USED ON THE KEYWAY SHALL BE LIMITED TO A MAXIMUM OF 10 DEGREES FROM
THE VERTICAL.

CONTRACTOR'S WORK AREA
THE CONTRACTOR'S WORK AND MATERIAL STORAGE AREA SHALL BE DEFINED BY THE CONTRACTOR AND NOTED
TO THE ENGINEER. THE CONTRACTOR SHALL SHORTLY UTILIZE AND SEED THIS CONTRACTOR'S AREA IN ORDER TO
RETURN IT TO ITS ORIGINAL CONDITION. PAYMENT FOR THIS WORK SHALL BE INCLUDED IN THE PRICE BID FOR
"SEEDING AND FERTILIZING (RURAL) AND MULCHING" BID ITEMS. WORK SHALL BE DONE OUTSIDE THE CONTRACTOR'S AREA
DAMAGED BY THE CONTRACTOR SHALL BE REPAIRED TO THEIR ORIGINAL CONDITION, AS DETERMINED BY THE
ENGINEER. NO ADDITIONAL PAYMENT WILL BE AUTHORIZED FOR THIS WORK.

PILE NOTES
SOUNDING AND TEST BORING DATA SHOWN ON PLANS WERE ACCUMULATED FOR DESIGNING AND ESTIMATING PURPOSES
THEIR INCLUSION IN THE PLANS DOES NOT CONSTITUTE A GUARANTEE THAT CONDITIONS OTHER THAN INDICATED WILL NOT
BE ENCOUNTERED.
THIS PROJECT USES THE LOAD AND RESISTANCE FACTOR DESIGN (LRFD) METHODOLOGY FOR DETERMINING PILE CONTRACT
LOADS. THE NOMINAL AXIAL BEARING RESISTANCE, NOMINAL AXIAL BEARING RESISTANCES WILL BE LARGER THAN BEARING
VALUES IN THE PLANS AND CONSTRUCTION CONTROL BLOW COUNTS WILL BE APPROXIMATELY THE SAME.
A WEAP ANALYSIS AND BEARING GRAPH WILL BE PREPARED BY THE CONTRACTING AUTHORITY THAT GIVES THE
RELATIONSHIP BETWEEN REQUIRED NOMINAL AXIAL BEARING RESISTANCE AND BLOW COUNT.

ABUTMENT PILES
THE CONTRACT LENGTH OF 65 FEET FOR THE ABUTMENT PILES IS BASED ON A MIXED SOIL CLASSIFICATION, A TOTAL
FACTORED AXIAL LOAD PER PILE (P/U) OF 138 KIPS, AND A GEOTECHNICAL RESISTANCE FACTOR (PHI) OF 0.65 FOR SOIL AND
0.70 FOR ROCK END BEARING.
THE NOMINAL AXIAL BEARING RESISTANCE FOR CONSTRUCTION CONTROL WAS DETERMINED FROM A COHESIVE SOIL
CLASSIFICATION AND A GEOTECHNICAL RESISTANCE FACTOR (PHI) OF 0.65 FOR SOIL AND 0.70 FOR ROCK END BEARING.
THE REQUIRED NOMINAL AXIAL BEARING RESISTANCE FOR ABUTMENT PILES IS 103 TONS AT END OF DRIVER RETAPS. THE
PILE CONTRACT LENGTH SHALL BE DRIVEN TO PER PLAN UNLESS PILES REACH REFUSAL. CONSTRUCTION CONTROL
REQUIRES A WEAP ANALYSIS WITH BEARING GRAPH.

PIER FOOTING PILES
THE CONTRACT LENGTH OF 45 FEET FOR THE PIER PILES IS BASED ON A MIXED SOIL CLASSIFICATION, A TOTAL FACTORED
AXIAL LOAD PER PILE (P/U) OF 143 KIPS, AND A GEOTECHNICAL RESISTANCE FACTOR (PHI) OF 0.65 FOR SOIL AND 0.70 FOR
ROCK END BEARING.
THE REQUIRED NOMINAL AXIAL BEARING RESISTANCE FOR CONSTRUCTION CONTROL WAS DETERMINED FROM A COHESIVE
SOIL CLASSIFICATION AND A GEOTECHNICAL RESISTANCE FACTOR (PHI) OF 0.65 FOR SOIL AND 0.70 FOR ROCK END BEARING.
PILES ARE ASSUMED TO BE DRIVEN FROM A START ELEVATION AT THE BOTTOM OF FOOTING.

THE REQUIRED NOMINAL AXIAL BEARING RESISTANCE FOR ABUTMENT PILES IS 103 TONS AT END OF DRIVE OR RETAP. THE
PILE CONTRACT LENGTH SHALL BE DRIVEN AS PER PLAN UNLESS PILES REACH REFUSAL. CONSTRUCTION CONTROL
REQUIRES A WEAP ANALYSIS WITH BEARING GRAPH.

DESIGN FOR 0° SKEW

243'-0" x 30'-6" PRETENSIONED
PRESTRESSED CONCRETE BEAM BRIDGE
INTEGRAL ABUTMENTS
81'-0" END SPANS
TEE PIERS
81'-0" INTERIOR SPAN

GENERAL NOTES

STA. 6+80.98 HWY F24W OVER INDIAN CREEK DECEMBER 2019

JASPER COUNTY

IOWA DEPARTMENT OF TRANSPORTATION-HIGHWAY DIVISION

PROJECT NUMBER: BRS-SWAP-CO60(124)-FF-50

JASPER COUNTY

HYDRAULICS

DRAINAGE AREA
287 SQ. MI.
STREAM SLOPE
0.0025078 FT./FT.
BRIDGE WATERWAY AREA
2,707.5 S.F.
DESIGN VELOCITY
5.24 FPS
DESIGN HIGH WATER ELEV.
816.99

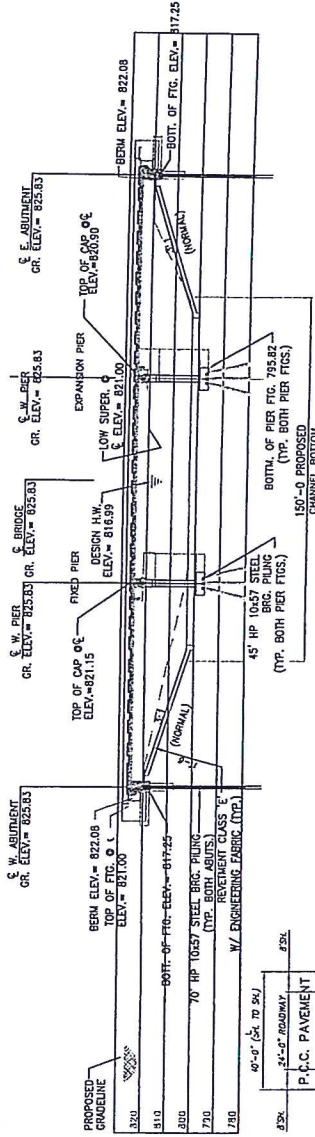
Q50
FREEBOARD
15.521 CFS
MAX BACKWATER DEPTH
0.23 FT.
STAGE ELEV.
817.47

Q100
FREEBOARD
18.168 CFS
MAX BACKWATER DEPTH
2.63 FT.
STAGE ELEV.
818.37

Q200
CALCULATED SCOUR DEPTH
19,900 CFS
21,000 CFS
504.1 FT.

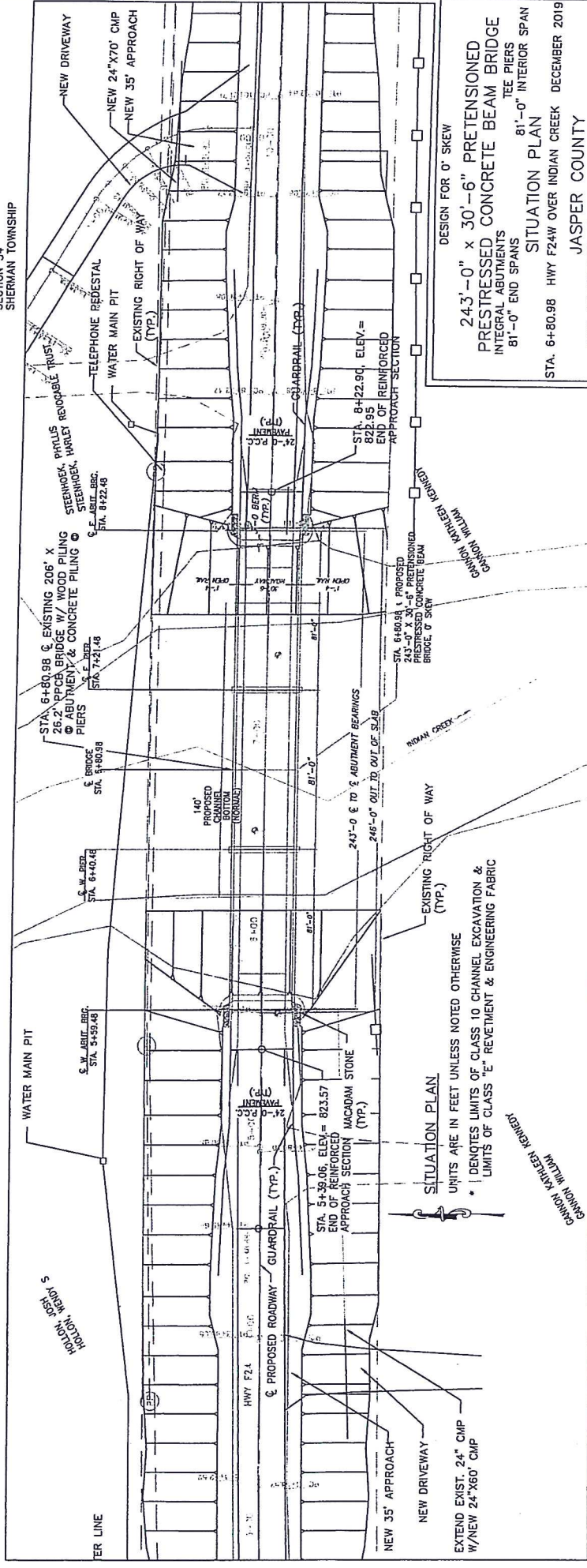
LOCATION

JASPER COUNTY
1.7 MI. W OVER PRAIRIE CREEK
SECTION 31
SHERMAN TOWNSHIP



TYPICAL APPROACH SECTION

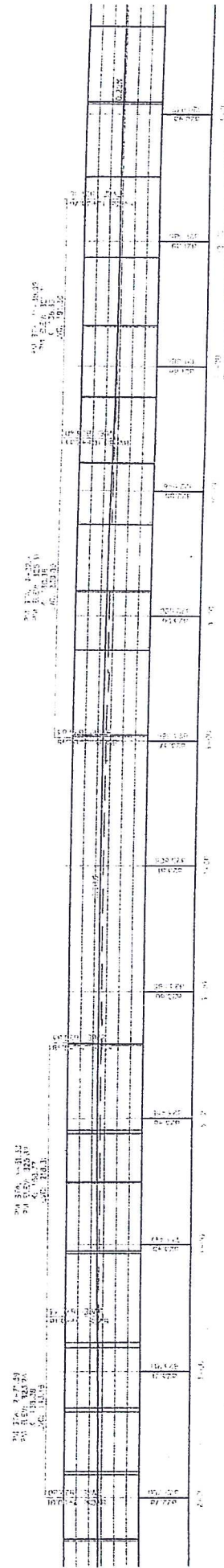
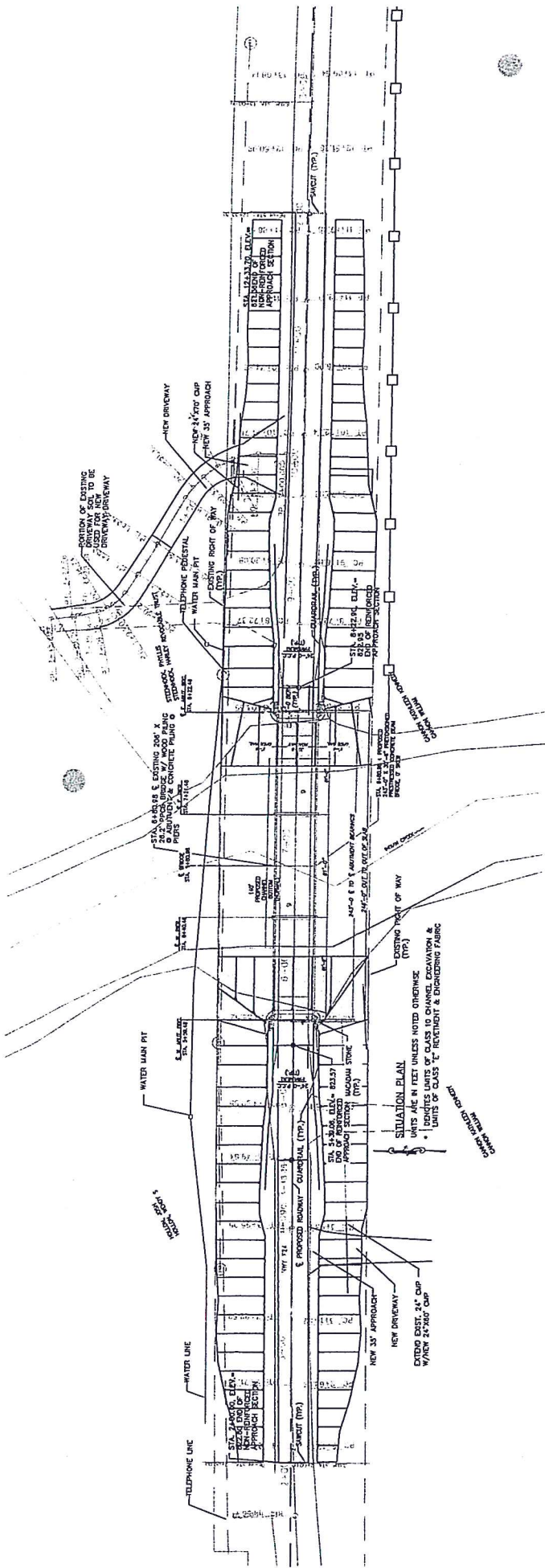
LONGITUDINAL SECTION NEAR ROADWAY



DESIGN FOR 0° SKEW
243'-0" x 30'-6" PRETENSIONED
PRESTRESSED CONCRETE BEAM BRIDGE
INTEGRAL ABUTMENTS
81'-0" END SPANS
SITUATION PLAN
81'-0" INTERIOR SPAN
STA. 6+80.98 HWY F24W OVER INDIAN CREEK
DECEMBER 2019
JASPER COUNTY
IOWA DEPARTMENT OF TRANSPORTATION-HIGHWAY DIVISION

PROJECT NUMBER: BRS-SWAP-CO50(124)-FF-50

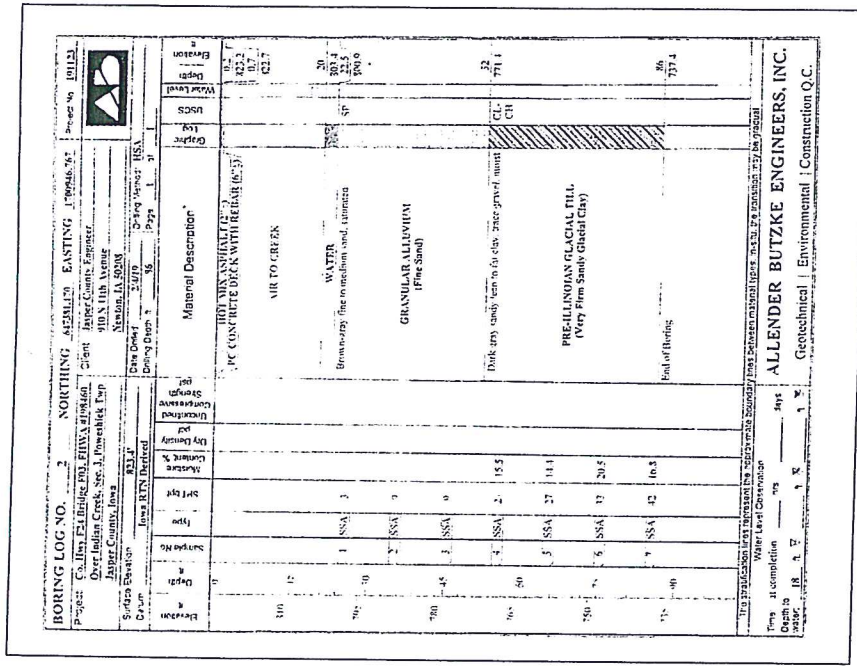
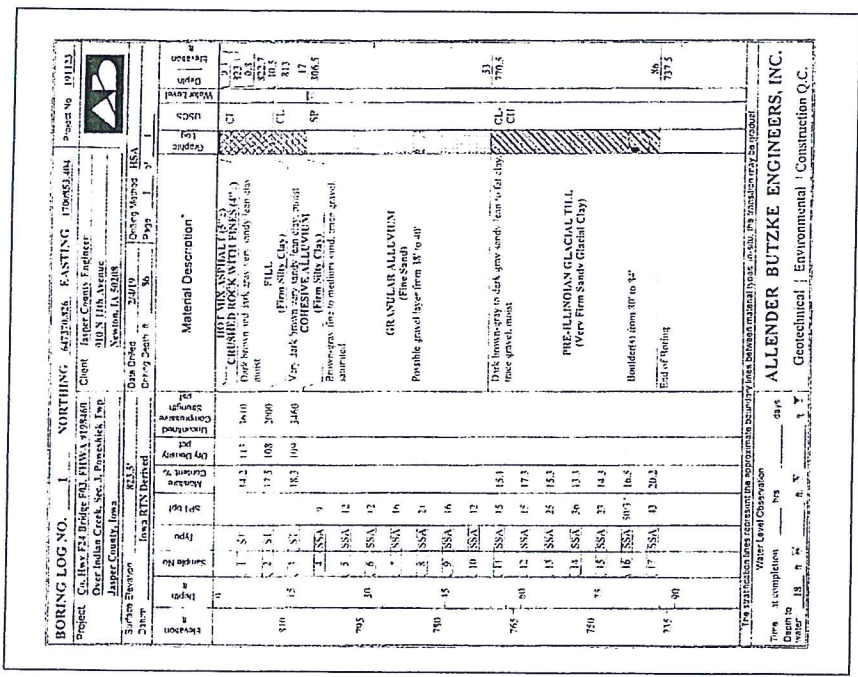
JASPER COUNTY



DESIGN FOR 0° SKEW
**243'-0" x 30'-6" PRETENSIONED
 PRESTRESSED CONCRETE BEAM BRIDGE**
 INTEGRAL ABUTMENTS
 81'-0" END SPANS
 GENERAL PLAN
 TEE PIERS
 81'-0" INTERIOR SPAN
 STA. 6+80.98 HWY F24W OVER INDIAN CREEK DECEMBER 2019
 JASPER COUNTY
 IOWA DEPARTMENT OF TRANSPORTATION—HIGHWAY DIVISION

PROJECT NUMBER: BRS-SWAP-C050(124)--FF-50

JASPER COUNTY

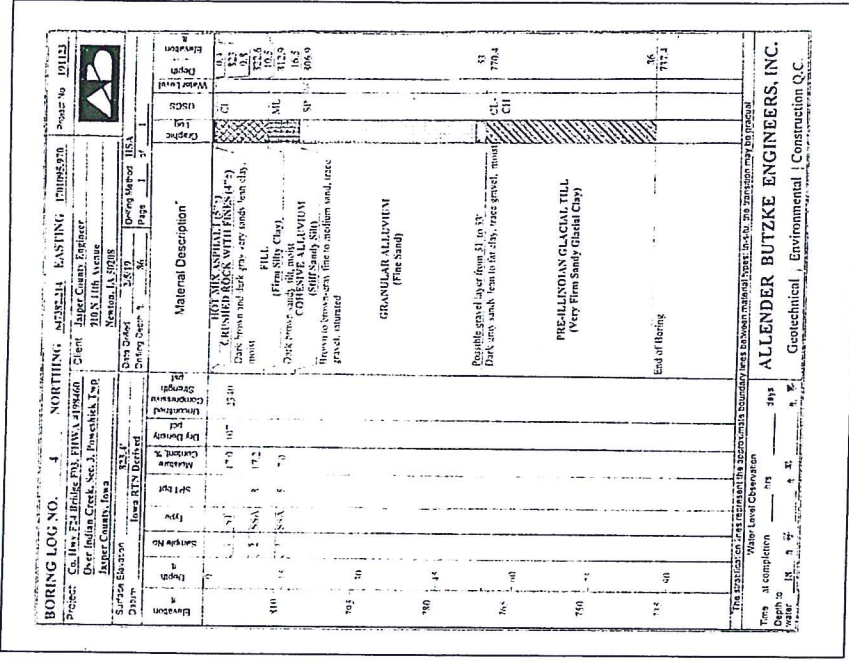
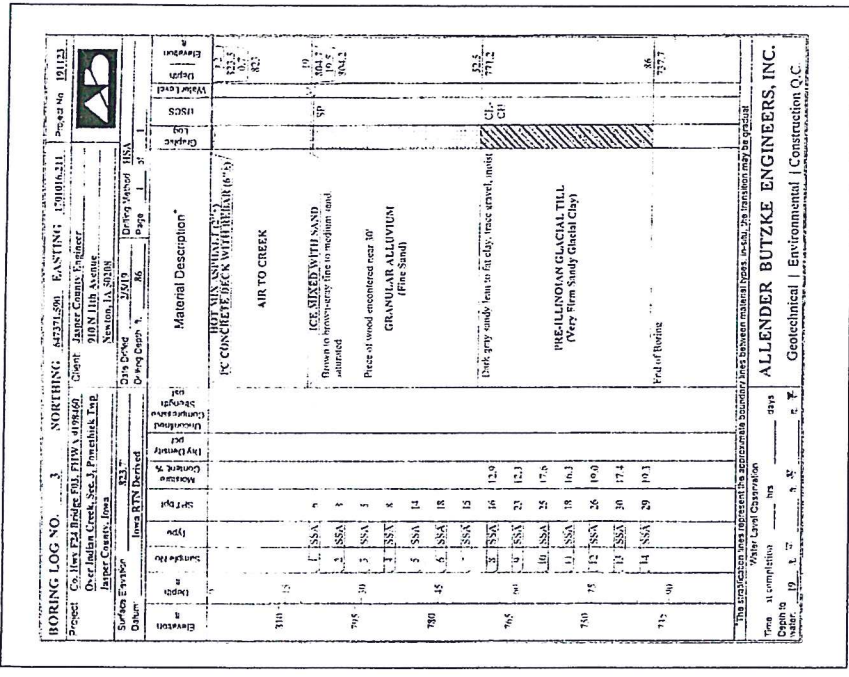


DESIGN FOR 0° SKEW
 243'-0" x 30'-6" PRETENSIONED
 PRESTRESSED CONCRETE BEAM BRIDGE
 INTEGRAL ABUTMENTS
 81'-0" END SPANS
 TEE PIERS
 81'-0" INTERIOR SPAN
 SOUNDING DATA
 STA. 6+80.98 HWY F24W OVER INDIAN CREEK DECEMBER 2010
 JASPER COUNTY
 IOWA DEPARTMENT OF TRANSPORTATION-HIGHWAY DIVISION

JASPER COUNTY

PROJECT NUMBER: BRS-SWAP-CO50(12)-FF-50

SHEET 6 OF 14



DESIGN FOR 0° SKEW

**243'-0" x 30'-6" PRETENSIONED
 PRESTRESSED CONCRETE BEAM BRIDGE**
 INTEGRAL ABUTMENTS
 81'-0" END SPANS

TEE PIERS
 81'-0" INTERIOR SPAN

SOUNDING DATA

STA. 6+80.98 HWY F24W OVER INDIAN CREEK DECEMBER 2019

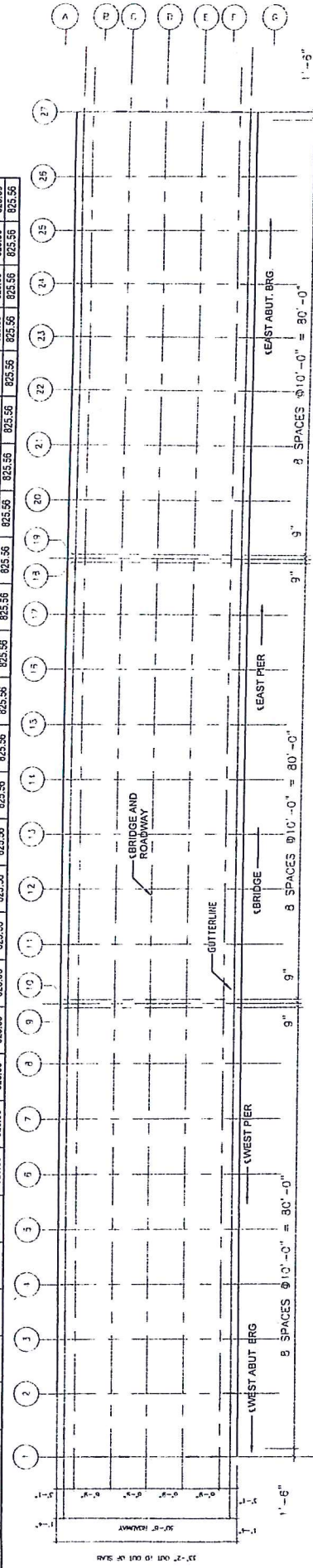
JASPER COUNTY
 IOWA DEPARTMENT OF TRANSPORTATION-HIGHWAY DIVISION

PROJECT NUMBER: BRS-SWAP-CO50(124)-FF-50

JASPER COUNTY

TOP OF DECK ELEVATIONS

LOCATION	C.L. W/ ABUT BRG.		C.L. PIER #1 BEARINGS		C.L. PIER #2 BEARINGS		C.L. E. ABUT BRG.																						
	LINE 1	LINE 2	LINE 3	LINE 4	LINE 5	LINE 6	LINE 7	LINE 8	LINE 9	LINE 10	LINE 11	LINE 12	LINE 13	LINE 14	LINE 15	LINE 16	LINE 17	LINE 18	LINE 19	LINE 20	LINE 21	LINE 22	LINE 23	LINE 24	LINE 25	LINE 26	LINE 27		
NORTH GUTTER LINE	825.56	825.56	825.56	825.56	825.56	825.56	825.56	825.56	825.56	825.56	825.56	825.56	825.56	825.56	825.56	825.56	825.56	825.56	825.56	825.56	825.56	825.56	825.56	825.56	825.56	825.56	825.56	825.56	825.56
BEAM LINE A	825.59	825.59	825.59	825.59	825.59	825.59	825.59	825.59	825.59	825.59	825.59	825.59	825.59	825.59	825.59	825.59	825.59	825.59	825.59	825.59	825.59	825.59	825.59	825.59	825.59	825.59	825.59	825.59	825.59
BEAM LINE B	825.71	825.71	825.71	825.71	825.71	825.71	825.71	825.71	825.71	825.71	825.71	825.71	825.71	825.71	825.71	825.71	825.71	825.71	825.71	825.71	825.71	825.71	825.71	825.71	825.71	825.71	825.71	825.71	825.71
CROWN LINE	825.83	825.83	825.83	825.83	825.83	825.83	825.83	825.83	825.83	825.83	825.83	825.83	825.83	825.83	825.83	825.83	825.83	825.83	825.83	825.83	825.83	825.83	825.83	825.83	825.83	825.83	825.83	825.83	825.83
BEAM LINE D	825.73	825.73	825.73	825.73	825.73	825.73	825.73	825.73	825.73	825.73	825.73	825.73	825.73	825.73	825.73	825.73	825.73	825.73	825.73	825.73	825.73	825.73	825.73	825.73	825.73	825.73	825.73	825.73	825.73
BEAM LINE E	825.59	825.59	825.59	825.59	825.59	825.59	825.59	825.59	825.59	825.59	825.59	825.59	825.59	825.59	825.59	825.59	825.59	825.59	825.59	825.59	825.59	825.59	825.59	825.59	825.59	825.59	825.59	825.59	825.59
SOUTH GUTTER LINE	825.56	825.56	825.56	825.56	825.56	825.56	825.56	825.56	825.56	825.56	825.56	825.56	825.56	825.56	825.56	825.56	825.56	825.56	825.56	825.56	825.56	825.56	825.56	825.56	825.56	825.56	825.56	825.56	825.56



24'-6" OUT TO OUT OF SLAB



ABUTMENT STEP DIAGRAM (LOOKING EAST)

ELEV.=821.15 FIXED PIER
ELEV.=820.90 EXPANSION PIER



PIER STEP DIAGRAM (LOOKING EAST)

DESIGN FOR 0° SKEW
243'-0" x 30'-6" PRETENSIONED
PRESTRESSED CONCRETE BEAM BRIDGE
INTEGRAL ABUTMENTS
81'-0" END SPANS
TEE PIERS
81'-0" INTERIOR SPAN
SUPERSTRUCTURE DETAILS
STA. 6+80.88 HWY F24W OVER INDIAN CREEK DECEMBER 2019
JASPER COUNTY
IOWA DEPARTMENT OF TRANSPORTATION-HIGHWAY DIVISION

PROJECT NUMBER: BRS-SWAP-CO50(124)-FF-50

JASPER COUNTY

SHEET 8 OF 14

STEEL BEAM GUARDRAIL AT CONCRETE BARRIER OR BRIDGE RAIL END SECTION

Refer to BA-200, BA-201, BA-202, BA-205, BA-206, BA-210, BA-211, BA-210, BA-211, BA-172, BA-173 and BA-211.

No.	Location	Lane(s) to which the obstacle is adjacent.		Station	Offset	Layout Lengths				Delimiters and Object Surfaces				Bid Items		
		Side	Direction of Traffic			VT	VF	ET	Long-Span System	Object Marker	Barrier Section	Steel Beam Section	End Terminal	Post Assembler		
1	0	8+20.28	0	8+20.28	0	35.00	0.00	50.0	0	0	0	0	0	0	0	0
2	0	8+20.28	0	8+20.28	0	35.00	0.00	50.0	0	0	0	0	0	0	0	0
3	0	8+20.28	0	8+20.28	0	35.00	0.00	50.0	0	0	0	0	0	0	0	0
4	0	8+20.28	0	8+20.28	0	35.00	0.00	50.0	0	0	0	0	0	0	0	0

GRADING FOR GUARDRAIL INSTALLATIONS

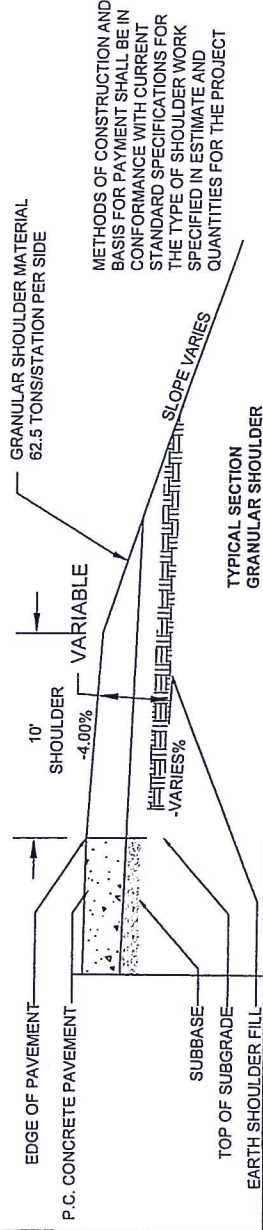
No.	Location	Station	Side	Dimensions (feet)		Remarks
				Excavation	Embankment	
1	H	8+20.28	LT	11.4	2.8	137.4
2	S	8+20.28	RT	11.4	2.8	137.4
3	N	8+20.28	LT	11.4	2.8	137.4
4	S	8+20.28	RT	11.4	2.8	137.4

BRIDGE APPROACH SECTION

Bridge Station	Location	Skew Ahead	Approach Pavement		Standard Road Plans		Subdrain		Remarks
			Length	Area	Approach	Subdrain 4"	Subdrain Outlet		
6+00.28	E	0	10	359.48	1094.47	11.52	0	12.18	1867.64
6+00.28	M	0	10	359.48	1094.47	11.52	0	10.92	1137.45

REMOVAL OF PAVEMENT

Begin Station	End Station	Side	Pavement		Area	Sw Cut	Remarks
			Type	LF			
8+20.28	8+20.28	Both	ASPH/CC	827.33	954.61	24.0	
8+21.48	8+21.48	Both	ASPH/CC	989.28	1096.59	24.0	



SAFETY CLOSURES

Refer to Section 1113 of the Standard Specifications

Station	Start Date	End Date	Remarks
8+20.28	12/15/20	12/15/20	Aspals
8+20.28	12/15/20	12/15/20	Aspals

GRANULAR SHOULDER

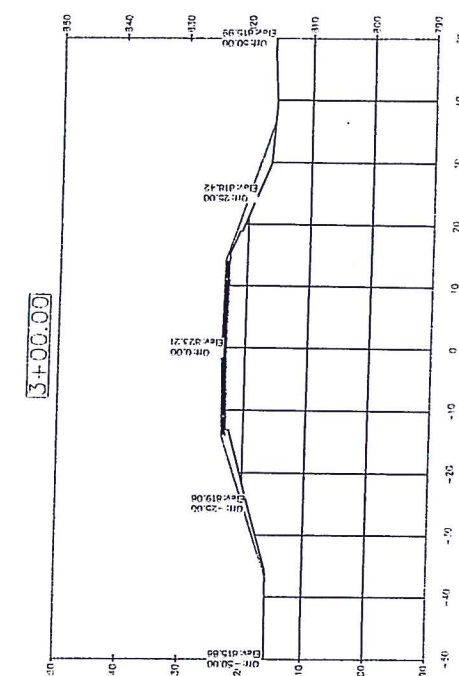
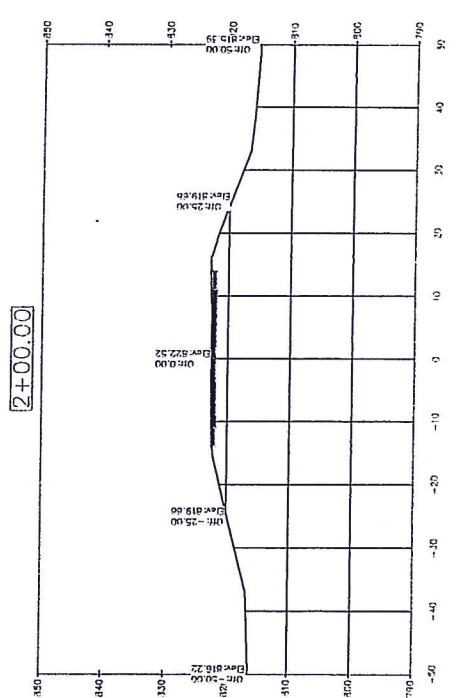
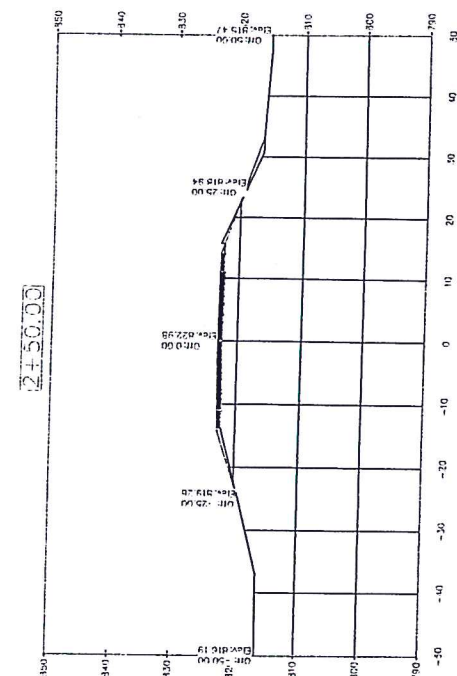
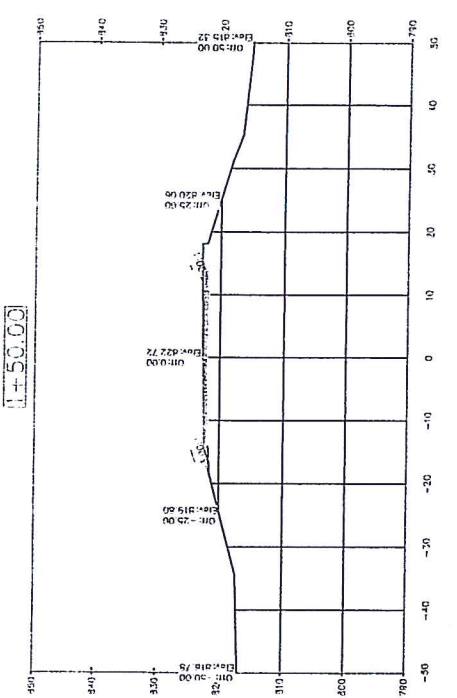
Station	Fill Area	Side	Width	Depth	Remarks
8+20.28	19.15	Both	8	6	
8+21.48	19.15	Both	8	6	

Total Volume Table

Station	Cut Area	Fill Area	Vol	Fill Vol	Cum Cut Vol	Cum Fill Vol	Net Vol
0+50.00	19.15	0.00	0.00	0.00	0.00	0.00	0.00
1+00.00	1.00	3.62	18.71	3.69	18.71	3.69	15.02
1+50.00	20.29	0.76	19.77	4.08	38.48	7.75	30.74
2+00.00	3.17	3.93	21.72	4.35	60.21	12.09	48.12
2+50.00	0.25	10.78	31.77	13.62	91.98	25.71	37.07
3+00.00	5.40	39.57	5.23	46.62	97.18	72.33	-3.72
3+50.00	0.00	102.54	5.00	131.42	102.18	203.75	-101.4
4+00.00	0.00	138.99	0.00	249.35	102.18	428.62	-326.44
4+50.00	0.00	121.81	0.00	230.04	102.18	677.97	-575.79
5+00.00	0.00	139.29	0.00	240.65	102.18	918.61	-816.42
5+50.00	0.00	0.00	0.00	128.04	102.18	1150.66	-1078.48
6+00.00	0.00	0.00	0.00	127.81	102.18	1278.47	-1206.29
7+00.00	0.00	0.00	0.00	0.00	102.18	1380.65	-1278.47
8+00.00	0.00	449.22	0.00	415.95	102.18	1896.60	-1894.42
8+50.00	0.00	154.48	0.00	158.98	102.18	2055.04	-2052.86
9+00.00	0.00	109.75	0.00	300.21	102.18	2355.25	-2353.07
9+50.00	0.00	246.01	0.00	384.97	102.18	2739.22	-2737.04
10+00.00	0.00	212.05	0.00	424.14	102.18	3163.36	-3161.18
10+50.00	1.49	172.67	1.38	352.24	102.18	3515.60	-3513.42
11+00.00	7.94	101.04	8.73	253.44	102.18	3869.04	-3866.86
11+50.00	13.79	82.21	20.12	170.60	102.18	4139.23	-4137.05
12+00.00	16.52	72.54	28.07	144.21	102.18	4483.44	-4481.26
12+50.00	5.75	74.39	20.61	136.03	102.18	4819.47	-4817.29
13+00.00	25.88	0.30	29.28	101.14	102.18	5120.61	-5118.43
13+50.00	5.11	1.13	29.69	1.32	210.50	5331.11	-5328.93
14+00.00	16.06	17.94	19.00	17.00	230.10	5561.21	-5559.03
14+50.00	16.84	21.47	39.25	26.54	256.62	5817.83	-5815.65
15+00.00	22.31	7.19	39.25	26.54	283.16	6100.99	-6098.81
15+50.00	1.90	3.67	22.43	10.05	319.24	6420.23	-6418.05
16+00.00	12.76	4.04	13.58	7.14	332.82	6753.07	-6750.89
16+50.00	35.71	12.96	44.88	15.74	377.70	7130.77	-7128.59

DESIGN FOR 0° SKEW
**243'-0" x 30'-6" PRETENSIONED
 INTEGRAL ABUTMENTS
 81'-0" END SPANS**
TABULATIONS
**243'-0" x 30'-6" PRETENSIONED
 INTEGRAL ABUTMENTS
 81'-0" END SPANS**
 TEE PIERS
 81'-0" INTERIOR SPAN
 STA. 6+80.98 HWY F24W OVER INDIAN CREEK DECEMBER 2019
JASPER COUNTY
 IOWA DEPARTMENT OF TRANSPORTATION-HIGHWAY DIVISION

PROJECT NUMBER: BRS-SWAP-C050(124)-FF-50



DESIGN FOR 0° SKEW

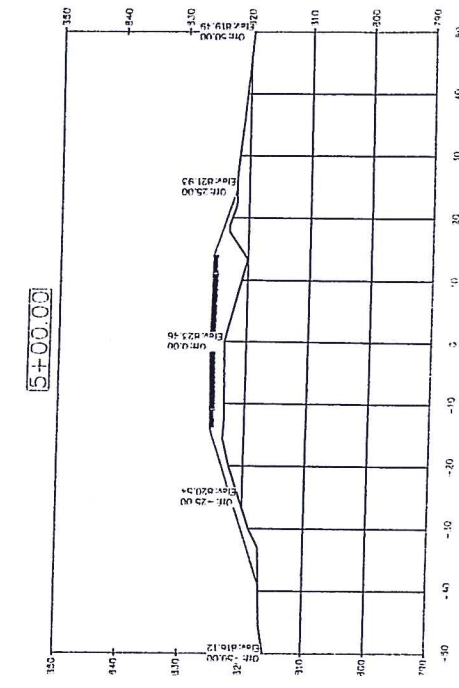
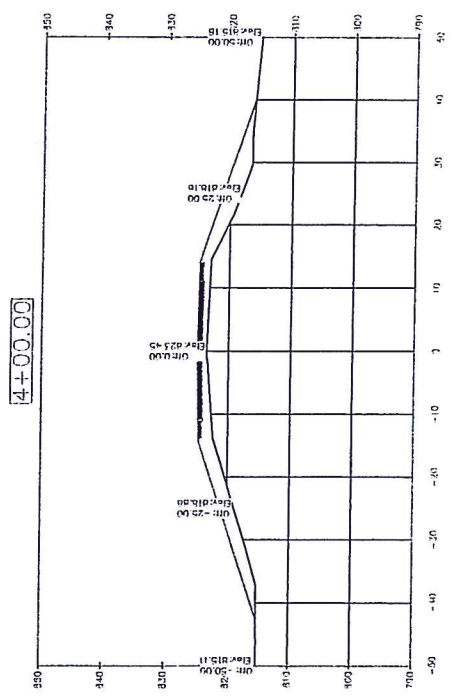
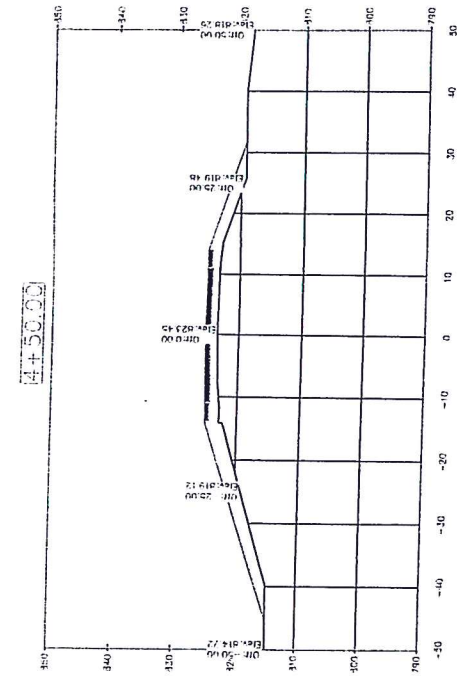
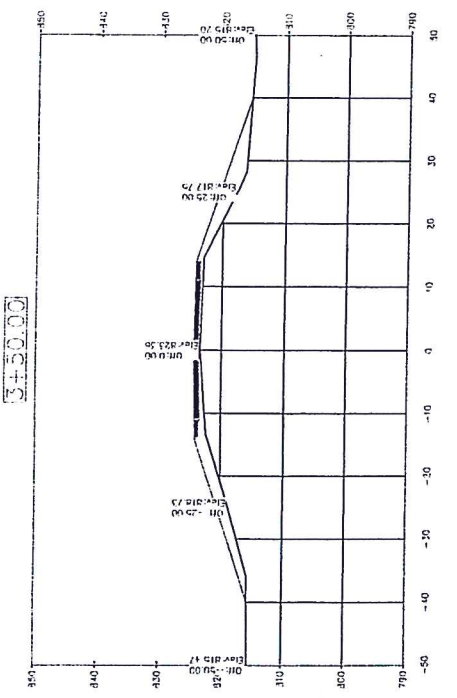
243'-0" x 30'-6" PRETENSIONED
 INTEGRAL ABUTMENTS
 TEE PIERS
 81'-0" END SPANS
 81'-0" INTERIOR SPAN

CROSS SECTIONS
 HWY F24W OVER INDIAN CREEK
 JASPER COUNTY

STA. 6+80.98 DECEMBER 2019
 IOWA DEPARTMENT OF TRANSPORTATION-HIGHWAY DIVISION

PROJECT NUMBER: BRS-SWAP-C050(124)-FF-50

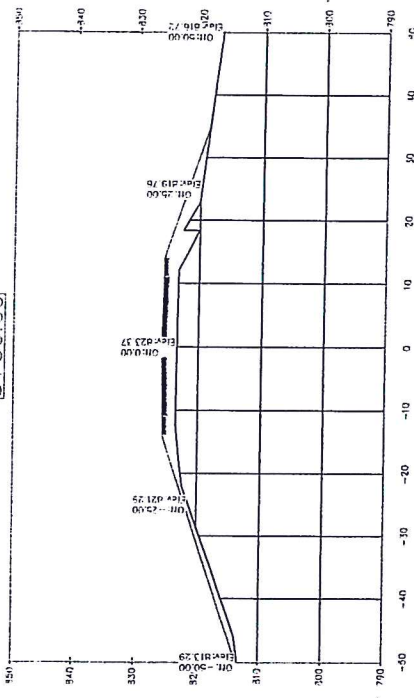
JASPER COUNTY



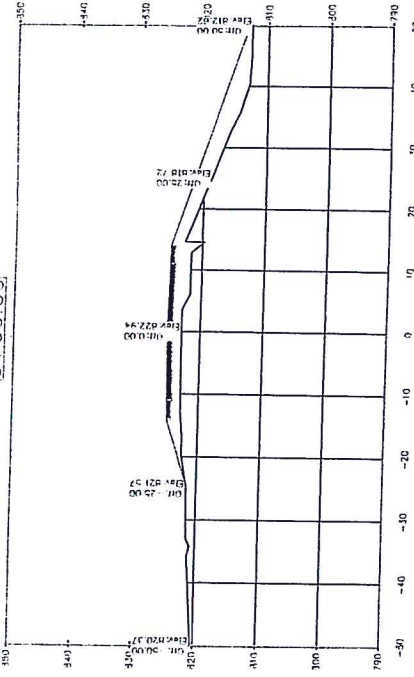
DESIGN FOR 0' SKEW
 243'-0" x 30'-6" PRETENSIONED
 PRESTRESSED CONCRETE BEAM BRIDGE
 INTEGRAL ABUTMENTS
 81'-0" END SPANS
 TEE PIERS
 81'-0" INTERIOR SPAN
 CROSS SECTIONS
 STA. 6+80.98 HWY F24W OVER INDIAN CREEK DECEMBER 2019
 JASPER COUNTY
 IOWA DEPARTMENT OF TRANSPORTATION-HIGHWAY DIVISION

JASPER COUNTY PROJECT NUMBER: BRS-SWAP-C050(124)-FF-50 SHEET 11 OF 14

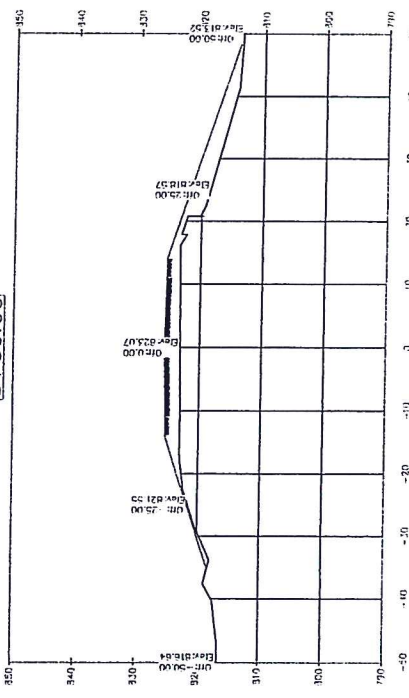
5+50.00



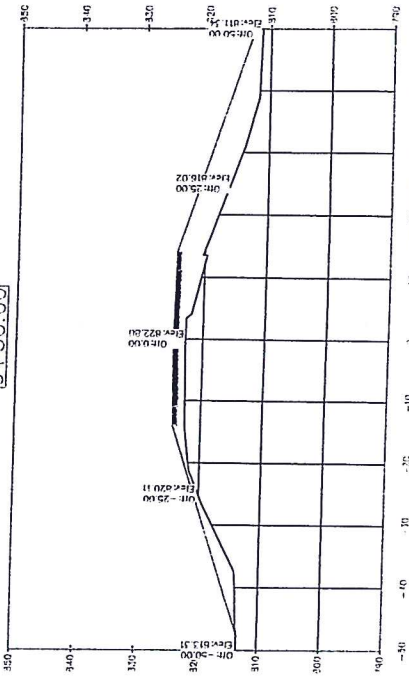
9+00.00



8+50.00



9+50.00



DESIGN FOR 0° SKEW

24.3'-0" x 30'-6" PRETENSIONED
 PRESTRESSED CONCRETE BEAM BRIDGE
 INTEGRAL ABUTMENTS
 81'-0" END SPANS
 TEE PIERS
 81'-0" INTERIOR SPAN
 CROSS SECTIONS
 STA. 6+80.98 HWY F24W OVER INDIAN CREEK DECEMBER 2019
 JASPER COUNTY

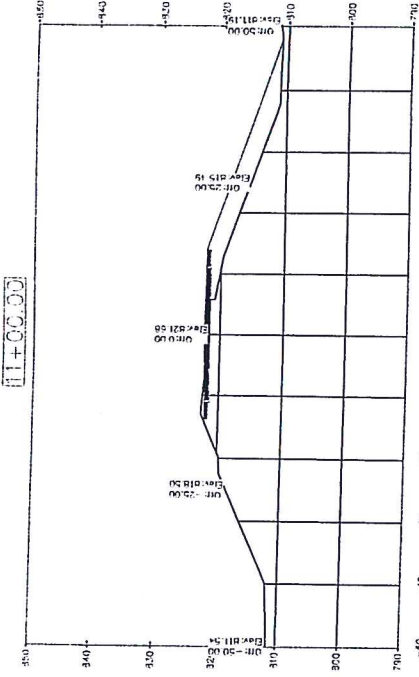
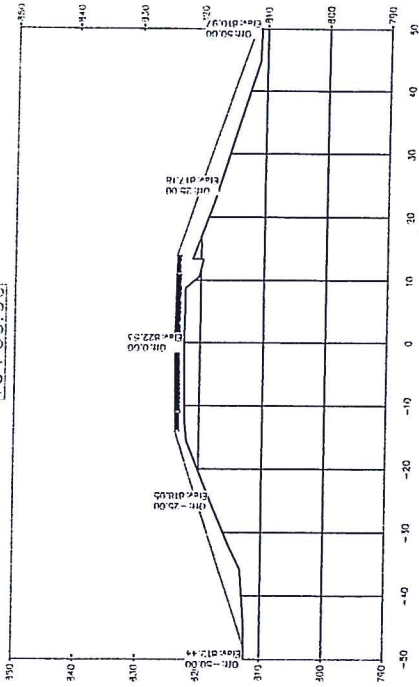
JASPER COUNTY

PROJECT NUMBER: BRS-SWAP-C050(124)--FF-50

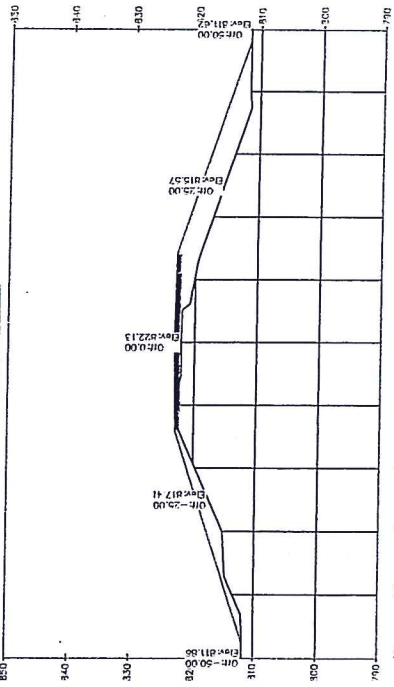
IOWA DEPARTMENT OF TRANSPORTATION-HIGHWAY DIVISION

SHEET 12 OF 14

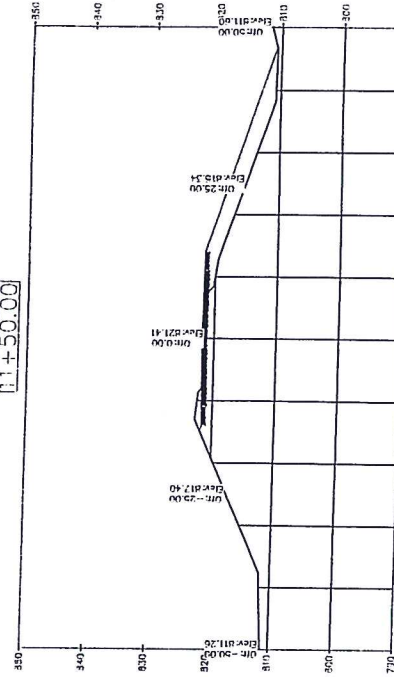
10+00.00



10+50.00



11+50.00



DESIGN FOR 0° SKEW

24.3'-0" x 30'-6" PRETENSIONED
 INTEGRAL ABUTMENTS
 81'-0" END SPANS
 TEE PIERS
 81'-0" INTERIOR SPAN
 CROSS SECTIONS
 STA. 6+80.98 HWY F24W OVER INDIAN CREEK DECEMBER 2019
 JASPER COUNTY

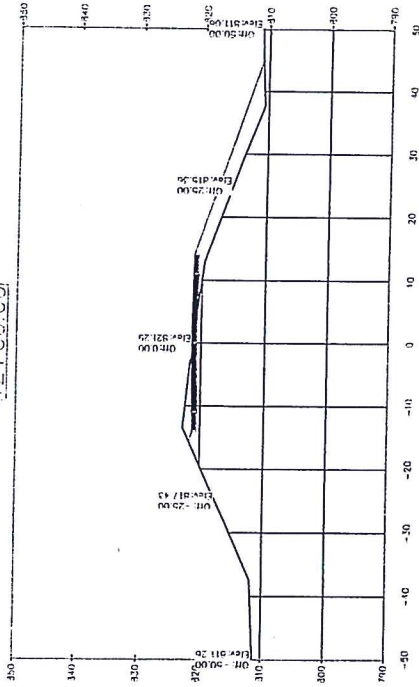
PROJECT NUMBER: BRS-SWAP-C050(124)--FF-50

JASPER COUNTY

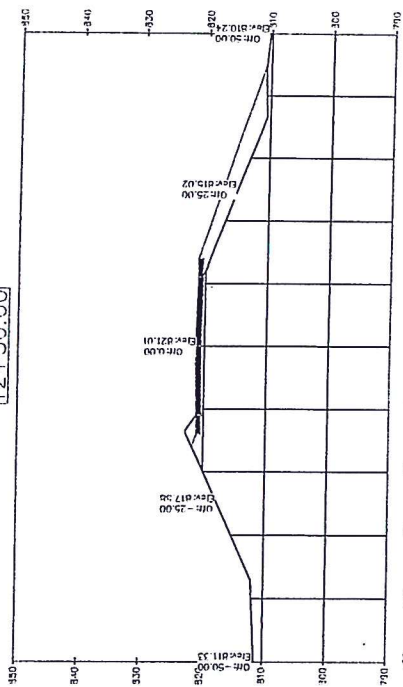
IOWA DEPARTMENT OF TRANSPORTATION-HIGHWAY DIVISION

SHEET 13 OF 14

12+00.00



12+50.00



DESIGN FOR 0° SKEW

24.3'-0" x 30'-6" PRETENSIONED
PRESTRESSED CONCRETE BEAM BRIDGE
INTEGRAL ABUTMENTS
81'-0" END SPANS

CROSS SECTIONS
TEE PIERS
81'-0" INTERIOR SPAN
STA. 6+80.98 HWY F24W OVER INDIAN CREEK DECEMBER 2019
JASPER COUNTY

JASPER COUNTY

PROJECT NUMBER: BRS-SWAP-C050(124)---FF-50

IOWA DEPARTMENT OF TRANSPORTATION-HIGHWAY DIVISION

SHEET 14 OF 14

Resolution No. _____

RESOLUTION AWARDING CONTRACT FOR
MAINTENANCE RESURFACING
PROJECT NUMBER L-ROCK(FY21)—73-50

Moved by, _____ seconded by, _____

To accept the total low bid from Martin Marietta and award the contract for said project L-ROCK(FY21)—73-50 at the per item cost as listed in the bid. Minimum contract cost of \$996,580.61 and a with a maximum contract cost of \$996,580.61. This project consists of placing granular material on roadways in Hickory Grove, Malaka, Mariposa, Independence, Clear Creek, Poweshiek, Sherman, Newton, Kellogg, and Rock Creek Townships in Jasper County. This Resolution awards the contract and authorizes the Chairman to sign the contract and performance bond.

AYES: _____

NAYS: _____

Approved this 7th day of January, 2020.

Dennis Carpenter
Chairman Board of Supervisors

Brandon Talsma
Board of Supervisors

Doug Cupples
Board of Supervisors

ATTEST: _____
Dennis Parrott
Jasper County Auditor

LL-ROCK(FY21)-73-50 Bid Tabulation

Jasper County
 Work Type: Granular Resurfacing
 Letting Date: 1/2/2020 11:00 AM

Engineer's Estimate

Apparent Low Bid
 Martin Marietta
 11252 Aurora Ave
 Des Moines, IA 50322
 BRUENING ROCK PRODUCTS, INC
 900 MONTGOMERY STREET
 DECORAH, IA 52101-0000
 MANATT'S, INC.
 1775 OLD HIGHWAY 6
 BROOKLYN, IA 52211-0535

Item Number	Description	Units	Quantity	Unit Price	Extended Price	Unit Price	Extended Price	Unit Price	Extended Price	Unit Price	Extended Price
Hickory Grove	1 1/8" Granular Rock	TON	6,736.0	\$16.00	\$107,776.00	\$13.40	\$90,262.40	\$16.95	\$114,175.20	\$23.77	\$160,114.72
			Hickory Grove Totals		\$107,776.00		\$90,262.40		\$114,175.20		\$160,114.72
Mariposa	1 1/8" Granular Rock	TON	5,269.0	\$16.00	\$84,304.00	\$13.25	\$69,814.25	\$16.95	\$89,309.55	\$24.72	\$130,249.68
			Mariposa Totals		\$84,304.00		\$69,814.25		\$89,309.55		\$130,249.68
Malaka	1 1/8" Granular Rock	TON	8,083.0	\$16.00	\$129,328.00	\$14.35	\$115,991.05	\$16.75	\$135,390.25	\$26.02	\$210,319.66
			Malaka Totals		\$129,328.00		\$115,991.05		\$135,390.25		\$210,319.66
Independence	1 1/8" Granular Rock	TON	7,771.0	\$16.00	\$124,336.00	\$14.95	\$116,176.45	\$16.95	\$131,718.45	\$29.42	\$228,622.82
			Independence Totals		\$124,336.00		\$116,176.45		\$131,718.45		\$228,622.82
Clear Creek	1 1/8" Granular Rock	TON	7,269.0	\$16.00	\$116,304.00	\$16.05	\$116,667.45	\$16.95	\$123,209.55	\$31.11	\$226,138.59
			Clear Creek Totals		\$116,304.00		\$116,667.45		\$123,209.55		\$226,138.59
Poweshiek	1 1/8" Granular Rock	TON	7,935.0	\$16.00	\$126,960.00	\$16.55	\$131,324.25	\$16.95	\$134,498.25	\$26.02	\$206,468.70
			Poweshiek Totals		\$126,960.00		\$131,324.25		\$134,498.25		\$206,468.70
Sherman	1 1/8" Granular Rock	ACRE	5,570.0	\$16.00	\$89,120.00	\$15.15	\$84,385.50	\$16.95	\$94,411.50	\$26.02	\$144,931.40
			Sherman Totals		\$89,120.00		\$84,385.50		\$94,411.50		\$144,931.40
Newton	1 1/8" Granular Rock	TON	5,831.0	\$16.00	\$93,296.00	\$13.65	\$79,593.15	\$16.75	\$97,669.25	\$25.30	\$147,524.30
			Newton Totals		\$93,296.00		\$79,593.15		\$97,669.25		\$147,524.30
Kellogg	1 1/8" Granular Rock	TON	8,188.0	\$16.00	\$131,008.00	\$12.73	\$104,233.24	\$13.95	\$114,222.60	\$22.59	\$184,966.92
			Kellogg Totals		\$131,008.00		\$104,233.24		\$114,222.60		\$184,966.92
Rock Creek	1 1/8" Granular Rock	TON	6,419.0	\$16.00	\$102,704.00	\$13.73	\$88,132.87	\$12.95	\$83,126.05	\$22.59	\$145,005.21
			Rock Creek Totals		\$102,704.00		\$88,132.87		\$83,126.05		\$145,005.21
				Contract Totals	\$1,105,136.00		\$996,580.61		\$1,117,730.65		\$1,784,342.00
				Percent of Estimate	100.00%		90.18%		101.14%		161.46%

December 31, 2019

Tuesday, December 31, 2019 the Jasper County Board of Supervisors met in regular session at 9:30 a.m. Supervisors Talsma, Cupples and Carpenter present and accounted for; Chairman Carpenter presiding.

Motion by Talsma and seconded by Cupples to amend the agenda to include a closed session in accordance with Iowa Code sections 21.5 (j) and 21.5 (c).

YEA: CUPPLES, TALSMA, CARPENTER

Motion by Cupples and seconded by Talsma to adopt Resolution 19-96 a hiring resolution certifying the following appointment to the Auditor for payroll implementation:

<u>DEPARTMENT</u>	<u>POSITION</u>	<u>EMPLPOYEE</u>	<u>PAY RATE</u>	<u>RANGE/STEP</u>	<u>EFFECTIVE DATE</u>
Secondary Roads	Skilled Laborer	Michael Doolittle	\$21.81	Hire-in Non- Progressive Union Scale	01/14/2020

YEA: TALSMA, CUPPLES, CARPENTER

A complete copy of the resolution is on file in the Office of the Jasper County Auditor.

Buildings and Grounds Director Adam Sparks asked the Board to approve the repair of the wastewater & sewage grinder for the jail.

Motion by Cupples and seconded by Talsma to approve the repair of the wastewater & sewage grinder for the jail by Electric Pump at a cost of \$13,187.97.

YEA: TALSMA, CUPPLES, CARPENTER

Motion by Talsma and seconded by Cupples to contract with Dave Winther of the Baker Group for preventative maintenance visits consisting of 2 hours per week to the recently purchased County building located at 315 West 3rd Street North, Newton, Iowa at a cost of \$122 per hour. The scope of work is to make sure the heat is on in the building & the HVAC is working properly. This does not include repairs or materials.

YEA: CUPPLES, TALSMA, CARPENTER

Motion by Talsma and seconded by Cupples to approve a letter of intent to move forward with a Solar Energy project with Simpleray Solar Energy upon the satisfactory review of the County Attorney on the documents.

YEA: CUPPLES, TALSMA, CARPENTER

No action was taken on agenda item #4

Motion by Cupples and seconded by Talsma to approve a liquor license for Westwood Golf Course & Exit 173 Inc.

YEA: TALSMA, CUPPLES CARPENTER

Motion by Talsma and seconded by Cupples to approve Board of Supervisors minutes for 12/17/2019.

YEA: CUPPLES, TALSMA, CARPENTER

Motion by Cupples and seconded by Talsma to approve claims for the period ending 12/24/2019.

YEA: CUPPLES, TALSMA, CARPENTER

There were no Board appointments.

Motion by Talsma and seconded by Cupples to enter into Closed Session in accordance with Iowa Code Sections 21.5 (j) to discuss the purchase or sale of a piece of real estate without compromising the County's position and Iowa Code Section 21.5 (c) to discuss strategy with legal counsel in matters that are presently in litigation or where litigation is imminent.

YEA: CUPPLES, TALSMA, CARPENTER

The Board entered back into Open Session.

Motion by Talsma and seconded by Cupples to adjourn the Tuesday, December 31, 2019 meeting of the Jasper County Board of Supervisors.

YEA: CUPPLES, CARPENTER, TALSMA

Dennis K. Parrott, Auditor

Denny Carpenter, Chairman